

Instructions: How to Move VIP® ECO and TwinGuard® Freezers Through Doorways

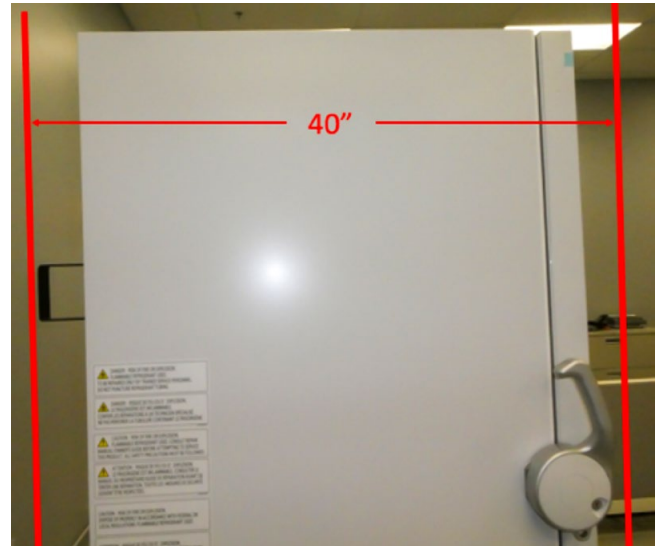
APPLIES TO MODEL NUMBERS MDF-DU702VH-PA, MDF-DU702VXC-PA.

Minimum door height for all models is 78.5".

Minimum door height is 80" with a 40" minimum door width for all units with back-up systems attached.

40" Doorway

Remove freezer from the pallet and roll into the desired room, pushing from the sides of the freezer.

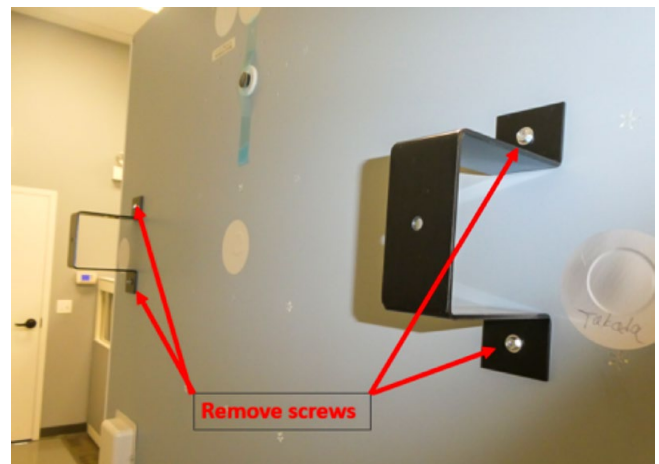


38" Doorway

Tools Required:

- 5/16" Socket or Nut Driver

1. Remove freezer from pallet.
2. Remove the two (2) nuts holding each of the two (2) earthquake brackets from the rear of the freezer.
3. Roll the freezer into the desired room, pushing from the sides of the freezer.



36" Doorway, Option A

Tools Required:

- 5/16" Socket or Nut Driver
- Phillips Head Screwdriver
- Time: 20 minutes

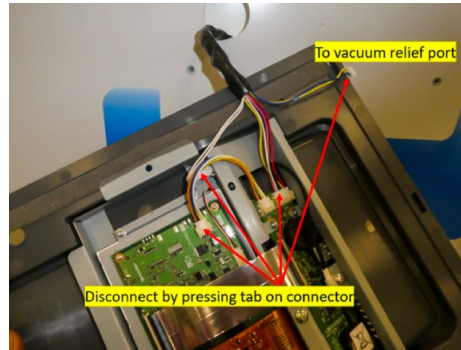
1. Remove freezer from pallet.
2. Remove the two (2) screws holding each of the earthquake brackets from the rear of the freezer.
3. Remove the tan sensor box cover by removing the two (2) Phillips head screws. **Tip: Use tape to secure the exposed sensor to the frame. This will help prevent damage to the wires when pushing the freezer through narrow spaces.**
4. Remove the front panel:
 - A. The front panel comes off by applying a bit of pressure. Gently pull the panel, starting from the bottom, moving to the top and finally pulling from the middle (see images below).



Instructions: How to Move VIP® ECO and TwinGuard® Freezers Through Doorways

PHC Corporation of North America

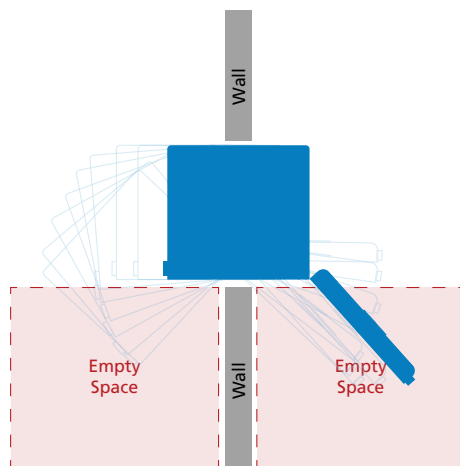
- B. Next, remove the six (6) screws holding the panel in place. **Note: Be careful not to pull the panel away once removed.**
 - C. Once the panel screws are extracted, press in on the clips holding the three (3) connectors in place. These are located on the rear of the board, connected to the vacuum port in the door. **Note: DO NOT PULL BY THE WIRES.**
 - D. Finally, tuck the wires into the space inside the freezer door to prevent damage when the freezer is pushed through the doorway.
5. Once the freezer is placed in the desired location, complete steps 2-4 in reverse to reinstall the removed components.



36" Doorway, Option B

To avoid removal of the front display panel, it is possible to pass through a 36" doorway by removing the bottom panel and opening the freezer door. (See Option A for instructions on removing the front panel).

Since the freezer door only opens to about 120 degrees, the area immediately surrounding the door, both inside and out, needs to be free of obstructions. The unit can then be pivoted as it comes through the doorway, allowing the freezer door to clear the walls/doorframe (see illustration).



32" Doorway

Tools Required:

- 5/16" Socket or Nut Driver
- Phillips Head Screwdriver
- Small Bladed Flat Head Screwdriver
- Ratchet Strap

Personnel required:

- 2-3 Persons

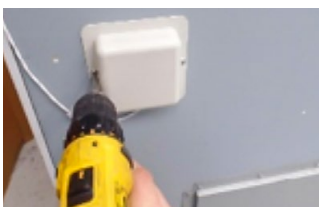
Time required for completion

- 30-60 minutes

1. Remove the two (2) nuts holding each of the two (2) earthquake brackets from the rear of the freezer.



2. Remove the tan sensor box cover by removing the two (2) Phillips head screws. **Tip: Use tape to secure the exposed sensor to the frame.** This will help prevent damage to the wires when pushing the freezer through narrow spaces. No additional pieces should need to be removed from the rear section.

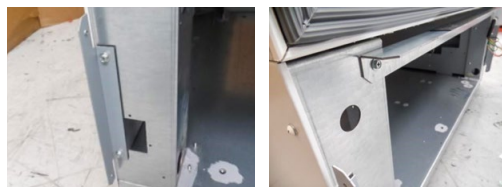


3. Next, remove the bottom kickplate panel. Open the outer door and remove the four (4) Phillips head screws (two (2) screws are located on the top section of the panel with the two remaining screws located one on either side of the panel).

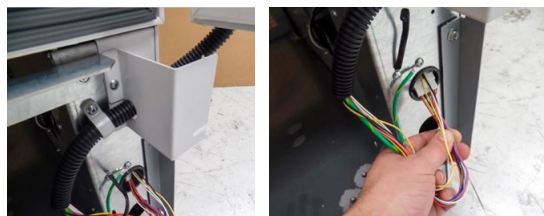


- A. Once the screws are removed, the panel will pull straight out. You will now have access to the door harness, located on the bottom right side of the door.

- B. Additional brackets may now also be removed (see image below).



4. Disconnect the door harness connectors and remove the harness.



- A. (Note: If it is difficult to remove the harness from the front, remove the side panel, secured by six (6) Phillips head screws, to allow for easier access.)



5. Once disconnected, carefully pull the harness through pass-through.

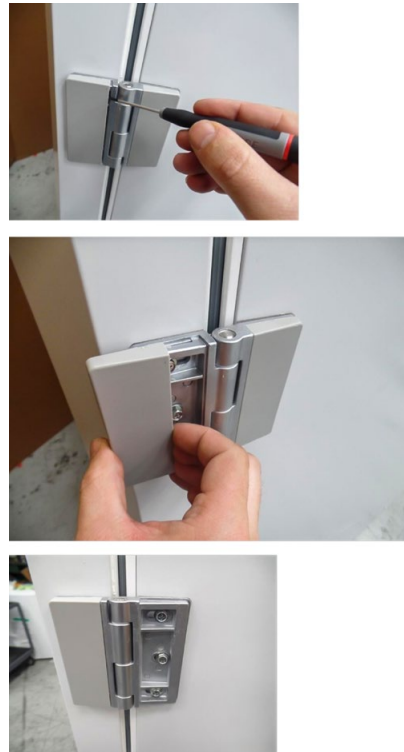


6. Remove the green grounding wire secured by one (1) Phillips head screw.



7. Remove the Phillips head screw holding the 'P' clamp in place and remove the tan bracket secured by two (2) Phillips head screws to free the door harness.

8. The freezer door is now ready to be removed. Using a small-blade flat head screwdriver, slide the cover to expose the hinge screws on the frame-side of the three (3) hinges.



9. Secure the door tightly against the frame using a ratchet strap (use a buffer to prevent scratches on the unit when the ratchet is tightened).



Instructions: How to Move VIP® ECO and TwinGuard® Freezers Through Doorways

10. Remove the freezer door with the assistance of 2-3 personnel. At least one person, with the aid of the tightened ratchet strap, should hold the door in place as the hinge screws are removed. Two people should then help brace and remove the door, as it is very heavy, after the hinge screws are removed. Once the door is now free, the total depth of the unit should now be 31.5".



11. Once the freezer is in the desired location, two people should hold the door in place, securing the outer door latch as the third person secures the middle hinges loosely. While bracing the door, re-attach the ratchet strap and tighten. Secure the remaining two (2) hinges and tightly secure screws, maintaining a level door. Once secured, remove the ratchet strap and test the door. Be sure that when closed, a good seal is formed around the entire frame.
12. Secure the door harness to original position and connect harness.
13. Secure grounding wire.
14. Reattach all pieces removed.



PHC Corporation of North America

1300 Michael Drive, Suite A, Wood Dale, IL 60191
Toll Free USA (800) 858-8442, Fax (630) 238-0074
www.phchd.com/us/biomedical