

SEPTEMBER 10-19 ♦ HUTCHINSON, KS



KANSAS STATE FAIR

CELEBRATING *all things* KANSAS

GUIDE SPONSORED BY:



♦ ♦ 2021 ♦ ♦ ♦ ♦ ♦ ♦ ♦ ♦

VISITOR GUIDE

TABLE *of* CONTENTS

3	Meet Ike
5	Listen Up!
7	Gate Admission
8	The Midway
9	Education
10	Competitive Events
12	Livestock
14	Concerts & Free Stage
16	Fairgrounds Map
18	Explore Kansas Festival
20	Sponsors
22	Full Schedule

MESSAGE *from the* GOVERNOR

Welcome to the Kansas State Fair!

This outstanding event has a rich and colorful history, tracing its roots to the 1870s when a group of businessmen organized a local fair in a small wooden livery stable behind Hutchinson's only bank.

Even though the second year of the local fair was scuttled by an epic invasion of grasshoppers, the townsfolk weren't deterred. They pushed on, as Kansans do, and organized the First Annual Reno County Fair.

Some 40 years later, the local event blossomed into what's now known as the Kansas State Fair. In the many decades since, the State Fair has created lasting memories for generations of Kansans and others who've headed here to take in a wonderful variety of events.

Agriculture is the lifeblood of our state, and central to our identity as Kansans. Much of what you'll see at the Fair is a reflection of the captivating beauty of our rural landscape and small towns.

Please stop by our booth at the Fair, which will feature highlights of rural Kansas and our Office of Rural

Prosperity, charged with creating a quality of life in rural Kansas communities that is second to none.

Of course, our State Fair always draws folks from towns of all sizes – rural, urban and suburban.

It's easy to see why. The State Fair offers fun and interesting activities designed to help people of all ages better understand the heritage of rural communities and the state as a whole.

In an era of so much competition for time, the Kansas State Fair remains an outstanding attraction, and for good reason. Regardless of the year or even decade, it is difficult to pass up the State Fair's many outstanding exhibits, entertainment, and fried foods.

Thank you to the many organizers and patrons who make this event possible every year.

Enjoy the Kansas State Fair!



Laura Kelly

LAURA KELLY
Governor of Kansas



MESSAGE *from the* GENERAL MANAGER

Welcome back to the Kansas State Fair! We are thrilled that 2021 will mark our 108th year celebrating agriculture, education, industry, innovation, and culture. All the things that make the Kansas State Fair an annual tradition for many families!

The anticipation for the commercial displays, livestock shows, entertainment, carnival rides, and of course, fair food is growing every day. We are also excited about the Free Stage entertainment, including the various acts performing at the Peoples Bank and Trust Arena, as these will add a definite Kansas flavor.

The Nex-Tech Wireless Grandstand shows will provide

more variety than ever, leading off with Bull Riding on the first Friday night and concluding with Darci Lynne Farmer on the last Sunday. There definitely will be something fun for everyone to experience here at the Fair.

Whether it is the Ye Old Mill, pig races, a Pronto-Pup or Kansas made ice cream, traditions are part of the Fair. It is great to have some things that provide that feeling of nostalgia, but there will also be new experiences, ranging from the first annual Pub Crawl to The Ninja Experience show at Gottschalk Park.

It is also important to recognize the Kansas State Fair as "Kansas' Largest Classroom." The Fair will host approximately 14,000 students from schools across

Kansas. Applied learning for young and old alike will be a consistent theme throughout the Fair, whether it is in the Birthing Center, pollinator gardens or the Education Center.

There will be many new and fun opportunities this year for you, your family, and friends to make memories. Our entire staff is committed to making sure that your experience at the Kansas State Fair is memorable for many years to come.



Ed Berger

ED BERGER
Interim General Manager, Kansas State Fair





MEET IKE

THE NEWEST MEMBER OF THE KANSAS STATE FAIR FAMILY!

The Kansas State Fair celebrates all things Kansas and nothing represents our state more distinctly than the official state animal – the American bison! Ike is super excited to finally meet you at the Fair this year. His main vision is happiness and prosperity for our great state, making him the ultimate Kansan and the ultimate friend.

During the 355 days of the year when Ike isn't strutting around with you at the Fair, don't be surprised to find him helping staff keep the fairgrounds maintained and mowed while sporting his Key overalls.

ABOUT IKE:

- ◆ **ANIMAL:** American Bison
- ◆ **BORN:** Jan. 29, 2020 amid the Smoky Hills of Maxwell Game Preserve
- ◆ **HEIGHT:** 7 feet
- ◆ **NAMED AFTER:** Dwight D. Eisenhower, the nation's 34th President, who hails from Abilene.

IKE'S FAVORITES:

- ◆ **FAVORITE CLOTHING:** His Key overalls, headquartered in Fort Scott, KS.
- ◆ **FAVORITE FAIR FOOD:** He loves all Fair food, but has a fondness for Pronto Pups.
- ◆ **FAVORITE RIDE:** Giant Slide and Ye Old Mill
- ◆ **FAVORITE SONG:** Home on the Range
- ◆ **FAVORITE DAY OF THE YEAR:** Besides Kansas Day (His Birthday), it's the first Friday after Labor Day.
- ◆ **FAVORITE GAME:** Kansas Trivia (he's nearly unbeatable)
- ◆ **FAVORITE BOOK:** The Kansas Guidebook for Explorers.

ABOUT KEY INDUSTRIES:

Key Industries is Ike's sponsor. Their beginnings are rooted in Fort Scott, Kansas. The year was 1908 and their first product offered was triple-stitched bib overalls. Over the course of the last century, Key's clothing line has expanded to accommodate the demands of the modern day worker — whether the hard work is in the office or in the field.

ALSO NEW IN 2021

KANSAS STATE FAIR OUTDOOR AUTO SHOW

Sponsored by Midway Motors

Featuring Corvettes, classic cars and trucks, custom and performance cars and street rods, the Auto Show will take place in the Administration parking lot on **Sunday, Sept. 19**. The show is hosted by the Central Kansas Corvette Association.

1ST ANNUAL PUB CRAWL

In the first ever State Fair Pub Crawl, walk, crawl, skip or hop to five of the best establishments on the grounds on **Thursday, Sept. 16th from 4-8pm**. Participating vendors will hold drink specials for Pub Crawlers only! Sign up at [kansasstatefair.com](https://www.kansasstatefair.com)



MUTTON BUSTIN' IN THE GRANDSTAND

Sponsored by Continental Siding

The annual Fair tradition is moving to the big stage! Fifty youth from across Kansas will be vying for the state championship at **6 p.m. Friday, Sept. 10** at the Nex-Tech Wireless Grandstand. The finals will take place before the short go of the Fair's Nex-Gen Bull Riding event that evening.



SHOP 'TIL YOU DROP

Calling all bargain hunters! If you love to shop, the Fair is a dream come true. Participate in our new "Shop 'Til You Drop" promotion on **Wednesday, Sept. 15** to save on the latest gadgets and other wares. On that day only, participating vendors will offer discounts on selected merchandise.

Find our Shop 'Til You Drop brochure online at [kansasstatefair.com](https://www.kansasstatefair.com), at our information center or at any gate the day of the event.





TRUCK BODIES



REACH FOR THE PEAK



A HIGHER STANDARD IN TOOL STORAGE

DRAWER PACK

- ▶ Aluminum Construction
- ▶ Single-action latch assembly with lock & key
- ▶ 600 lbs capacity per drawer
- ▶ Lock-in/lock-out drawer slides

BOLT BIN

- ▶ Aluminum Construction
- ▶ Pull style handles
- ▶ Removable Door Enclosure

QUICK 2 WEEK LEAD TIME ON DRAWER SYSTEM ORDERS

ELEVATE CRANE PERFORMANCE

Summit's line of electric and hydraulic telescopic service cranes lifting capacities range from 4,000 lbs. to 14,000 lbs. with a maximum reach of 29 ft. Designed with strength, durability, and safety, Summit cranes can meet the demands of heavy-duty applications.



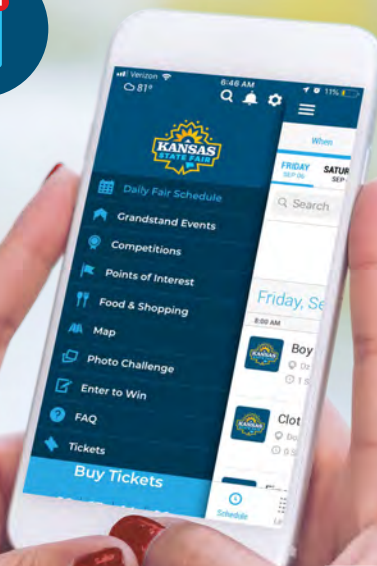
CONTACT SUMMIT PARTS FOR MORE INFO **888-402-8104**
OR VISIT **SUMMITBODIES.COM**



DOWNLOAD THE KANSAS STATE FAIR APP TODAY

AVAILABLE ON IPHONE & ANDROID DEVICES

- DAILY SCHEDULE
- INTERACTIVE MAP
- FEATURED EVENTS
- AND MORE!



THE KANSAS
STATE FAIR APP IS
SPONSORED BY:



FIND YOUR WAY. SAVE YOUR FAVORITES. PURCHASE TICKETS. HAVE MORE FUN!

LISTEN UP!

Here's what you need to know to navigate everything from the fried food, to the Midway, to the barns, and the rest of the Kansas State Fairgrounds.

CHANGES for 2021



WHAT YOU CAN BRING

Wagons, coolers with non alcoholic beverages, your own food and service animals.



WHAT YOU CAN'T BRING

Bicycles, skateboards, pets, alcohol and glass bottles. Bicycle racks are located at gates 1, 3, and 9.

For more information on items that are allowed in the Fair, see the Frequently Asked Questions on the Fair's website - www.kansasstatefair.com.

TRANSPORTATION RENTALS



Wheelchair, stroller, and mobility carts are available for rent at two locations: south of Gate 5 and west of Gate 9. For more information and reservations contact Scootaround Mobility Rentals at 1-888-441-7575.

SHUTTLES

Free shuttles will run from the Fair to the Hutchinson Trade Center on weekends from 12 p.m. to 11 p.m.; 12 p.m. to 7 p.m. on Sept. 19.



LOST & FOUND

The Lost and Found is located at the west end of the Administration Building (620) 669-3637.



TRAMS

See the Fair map in the guide or on our mobile app for tram stop locations. Sponsored by Evergy.

ELECTRIC CAR CHARGING

The nearest charging stations are located at the Hutchinson Regional Medical Center and Strataca Salt Museum.

ADA ACCESSIBLE PARKING



There are three paved areas available in the public parking lots: Gate 5, south of State Fair Rd.; Gate 8, corner of 23rd Ave. and Plum St.; Gate 9, corner of E. 20th Ave. and Plum St.



MERCHANDISE

Show your love of the Fair! State Fair merchandise is sold at the KSF Foundation booth near the fountain across from Ye Old Mill.



NURSING MOTHERS ROOMS

Rooms that offer privacy and a quiet atmosphere for nursing are located in the Encampment Building, at Cottonwood Court in the Women's Restroom and at the First Aid Station in the Administration Building.



GATE HOURS

11 a.m. to 9 p.m.
Sept. 10
9 a.m. to 9 p.m.
Sept. 11-18
9 a.m. to 6 p.m.
Sept. 19



FIRST AID

Located at the west end of the Administration Building.

THE ARENA

The free stage arena has a new sponsor! It will now be known as the Peoples Bank and Trust Arena.

KDWP AQUARIUM

The Kansas Department of Wildlife and Parks Aquarium has moved into the Eisenhower Building.

MOO U TOURS

Moo U tours will begin at the Birthing Center. See page 9 for more information.

SUDSY'S

Sudsy's Handwashing Station is back! Now located in front of the Birthing Center.

FINE ARTS

Fine Arts competitive exhibits are joining foods and clothing & textiles competitions in the Domestic Arts Building.

SCOUTS

Scouts is joining agriculture and floriculture in the Pride of Kansas Building.



BUILDING HOURS

11 a.m. to 9 p.m.
Sept. 10
9 a.m. to 9 p.m.
Sept. 11-18
9 a.m. to 6 p.m.
Sept. 19

*some exceptions apply, go to Plan Visit on the Fair's website for most up-to-date hours.



renoirlabs.com

Facial Rejuvenation

Cutting-Edge LED Anti-Aging

YOUNGER - HEALTHIER SKIN

- Dual Action Technology
- 100% Safe & Natural
- Dermatologist Tested
- Lifetime Warranty

www.RenoirLabs.com



LOCATED IN THE
MEADOWLARK BUILDING, #87 & #88

GATE ADMISSION

TYPE	BEFORE SEPT. 10	SEPT. 10-19
Adult (age 13+)	\$7	\$10
Child (age 6-12)	\$4	\$6
Senior (age 60+)	\$4	\$6
Military w/ ID (age 6+)	\$4	\$4

Purchase your Kansas State Fair tickets by Sept. 9 for discount gate admission! Ticket outlets include the Kansas State Fair ticket office at 2000 N. Poplar or any Kansas Dillons store. Military tickets can be purchased at McConnell Air Force Base or at the Fair gates.

SEASON PASS

\$40 (\$100 value)

- ♦ 10 gate admission scans on a card
- ♦ Can be used one per day, all at once, or in any increment



SAVE on GATE ADMISSION!

Dillons

DOLLAR DAY
MONDAY, SEPT. 13

Gate admission is just \$1 or get in free with a Dillons Plus Card on Dillons Dollar Day! One person admitted per card.

4 AFTER 4

TUESDAY, SEPT. 14 & THURSDAY, SEPT. 16

Get in for \$4 after 4 P.M. on Tuesday and Thursday with this evening deal!

For more information on our kids, family, seniors and couples packages and passes, call 620-669-3618 or visit kansassstatefair.com and click on Buy Tickets. Supplies are limited, purchase before Sept. 10.

TASTY *tuesday*

SEPT. 14 **\$2.00 CONCESSIONS***

Find new favorites • Try something different • Introduce your favorites to your friends

CHUBBS & SPUDDS



deep fried

Pickles • Green Beans • Mac & Cheese

CONNIE'S FUNNEL CAKES

4 inch **FUNNEL CAKE**

COOPER NUT KETTLE

cinnamon

ROASTED NUTS

LEIMON'S PIZZA



SLICE OF PIZZA



CREAMY RICH

single dip

Ice Cream

WESTMORELAND CONCESSIONS

SHORT CORN DOG ♦ MINI FUNNEL CAKE ♦ NACHOS

LH ICE CREAM

3 1/2 oz dip
ICE CREAM



For more information and locations go to kansassstatefair.com or grab a flyer at the gate.

MIDWAY

SCHEDULES, DEALS AND MORE



GREAT DEALS

5 RIDE PUNCH CARD, \$15

Allows for one ride each on the Ye Old Mill, State Fair Boats, Giant Yellow Slide, Sky Ride and KSF Railroad – a \$16.50 value. Purchase at the Kansas State Fair Ticket Office. Not available after Sept. 10.

WRISTBANDS, \$35*

Ride any midway ride as many times as you want on ONE wristband day. See Midway Schedule for dates.

DILLONS RIDE SHEETS, \$20*

Purchase a sheet of 20 ride tickets good for rides on the Midway. Buy at the KSF Ticket Office or at any Dillons. Price increases to \$25 after Sept. 9.

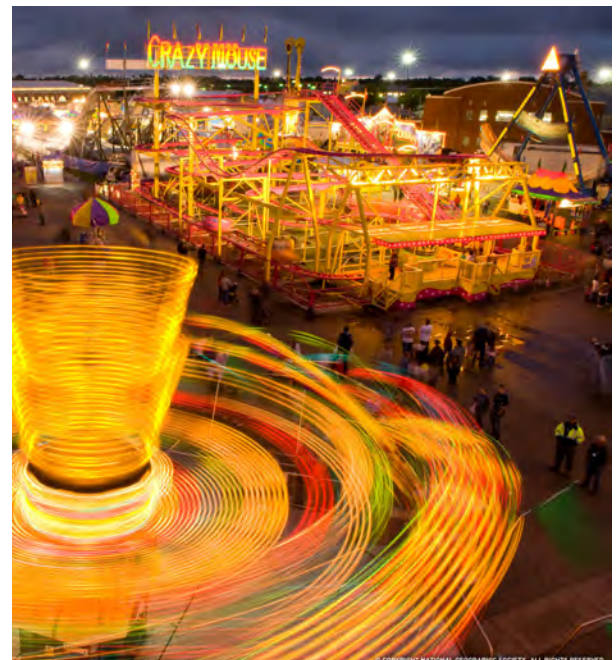
**Excludes Train, Sky Ride, Ye Old Mill, Big Slide, and Boat Ride. Available at the KSF Ticket Office or online at kansassstatefair.com.*



MIDWAY SCHEDULE

DATE SPECIALS TIMES

Fri, Sept. 10	Wristband Day	3 p.m. - 11 p.m.
Sat, Sept. 11		11 a.m. - 11 p.m.
Sun, Sept. 12		Noon - 10 p.m.
Mon, Sept. 13	All Rides 1 Ticket	Noon - 10 p.m.
Tues, Sept. 14	Wristband Day	3 p.m. - 10 p.m.
Wed, Sept. 15	Wristband Day	Noon - 10 p.m.
Thurs, Sept. 16	Wristband Day	3 p.m. - 10 p.m.
Fri, Sept. 17	Wristband Day	Noon - 11 p.m.
Sat, Sept. 18		11 a.m. - 11 p.m.
Sun, Sept. 19	Wristband Day	Noon - 8 p.m.



FAIRGROUND RIDES & SCHEDULE

RIDE	PRICE	TIME
Big Slide	\$2 (4 for \$7)	9 a.m. - 7:30 p.m.
State Fair Boat Ride	\$4	9 a.m. - 7:30 p.m.
Sky Ride	\$4 One-Way, \$6 Roundtrip	9 a.m. - 7:30 p.m.
State Fair Railroad	\$4	9 a.m. - 7:30 p.m.
Ye Old Mill	\$3.25	10 a.m. - 10 p.m.

Questions? Contact the KSF Ticket office at 620-669-3618



the

KANSAS STATE FAIR

IS KANSAS' LARGEST CLASSROOM

There is no shortage of learning opportunities! Each year, more than 13,000 students from preschool to high school travel to the Fair to learn more about the richness of our state through hands-on experiences.



EDUCATION CENTER

Sponsored by Kansas Farm Bureau

Students, parents and teachers can learn more about the Fair's plethora of educational opportunities at the Education Center. This year's topics focus on the importance of pollinators to agriculture production and the American Bison. Educational material like Agriculture and Pollinator Passports, Math-On-A-Stick and Ferris Wheel ABC are available for pick-up.

Hours/Location: 9 a.m. to 7 p.m. at the intersection of Bison Boulevard and Lake Talbott Avenue



DR. GODDARD'S LAB

Dr. Goddard's Lab is an interactive show using live rocketry demonstrations to teach force and propulsion, plus early rocket history. The lab is presented by the Cosmosphere International SciEd Center and Space Museum.

Hours/Location: 10 a.m., 11 a.m., noon and 2 p.m. at the Education Center

BIRTHING CENTER

Partnership with KSU College of Veterinary Medicine

A unique experience of the miracle of life – the newborn calves, lambs, kids, piglets, ducklings and chicks are always a hit for fairgoers of all ages. "Bessie," K-State's birthing simulator cow, provides a hands-on experience of the birth of a calf.

Hours/Location: 9 a.m. to 8 p.m. at the corner of 20th Ave. and Ft. Scott Blvd.

3 ways to

EARN FREE ICE CREAM!

- ♦ Fill out an Agriculture or Pollinator Passport.
- ♦ Complete a scavenger hunt around the grounds with our AgVenture Photo Contest in our app.
- ♦ Take the Moo U tour.

Those who show their completed work at the desk in the Education Center will receive a coupon for ice cream at the Dairy Bar under the Nex-Tech Wireless Grandstand.
Sponsored by Kansas Farm Bureau.

Learn more about Kansas' Largest Classroom field trips by visiting www.KansasStateFair.com.



CONSTRUCTION CAREERS ALLIANCE OF KANSAS

This interactive experience introduces youth of all ages to careers in the construction industry. Hands-on activities include an excavator simulator, nail driving competition, remote control dump trucks, virtual reality drone controls, plus more.

Hours/Location: Ad Astra Building, check the Fair App for updates and times.

AGRILAND

Students learn how agriculture touches their daily lives – from the food they eat to the clothes they wear, through hands-on activities. They can weigh themselves on a livestock scale, milk a cow, drive a combine, see how a cotton gin works and learn about what's going on in the living soil under their feet.

Hours/Location: 9 a.m. to 9 p.m. in the Pride of Kansas Building

MILKING PARLOR

Sponsored by Southwest Dairy Farmers

This live exhibit is narrated by a Kansas dairy professional who walks students through the milking process, the life cycle of a dairy cow and answers questions about milk's journey.

Hours/Location: Demonstrations are at 10 a.m., 11 a.m., 12 p.m., 1 p.m., 2 p.m. & 6 p.m. next to Prairie Pavilion



FREE GUIDED BARN TOURS - MOO U

Sponsored by Kansas Farm Bureau

Fairgoers can take a guided, 45-minute walk through the world of poultry, beef, dairy, sheep and swine; and receive free ice cream at the Dairy Bar after the tour.

Hours/Location: Tours are at the top of the hour from 9 a.m. through noon and 2 p.m. through 5 p.m. in front of the Birthing Center on 20th Ave.

Education related questions? Email jacki.eckert@ks.gov

BEST *of the* BEST

A FEW OF THE COMPETITIONS FOR 2021

Whether it is showing livestock, growing big pumpkins, making pies, or even carving butter, there is something for everyone at the Kansas State Fair. This year, we are adding even more unique and exciting competitions to our already broad lineup.

YOUTH FAVORITE COOKIE CONTEST

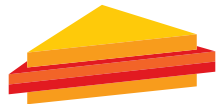


Contestants will share their favorite cookie that Grandma (or Grandpa, Auntie or Uncle) makes for them. The contest takes place Sunday, Sept. 12 at 10:30 a.m. in the Domestic Arts Building. *Sponsored by Robert Shirer.*

BISCUIT BAKE-OFF



The competitions are always exciting in the Kansas State Fair's Domestic Arts Building and that includes our new "Biscuit Bake-Off!" Contestants will aim for the perfect biscuit using Hudson Cream Self-Rising Flour. On Sunday, Sept. 12 the biscuits will be prepped at 12:30 p.m. and judged at 1:30 p.m. *Sponsored by Stafford County Flour Mills.*



STACKER SANDWICH CONTEST

Does your sandwich stack up? Come see if our contestants have what it takes to create a mouth-watering barbecue stacker sandwich for our fair-time competition! The prep will begin at 2:30 p.m. on Sept. 12 in the Domestic Arts Building and judging will follow. *Sponsored by The Hickory Stik.*

QUICK AND EASY



The "Instant Pot" hype continues to grow in today's world. This year, home cooking whizzes show us their favorite recipes using an Electric Pressure Cooker, "Instant Pot" or Multi-Cooker. The judging takes place Sat., Sept. 11 at 12:30 p.m. in the Domestic Arts Building. *Sponsored by Apron Strings.*

QUILT BLOCK CONTEST

This year, Kansas quilters are expressing their State Fair memories — on fabric. These blocks will be used to create a State Fair quilt that will be auctioned off during the 2022 Fair. Stop by the Domestic Arts Building to see all the handiwork from across Kansas. Also, there are opportunities to purchase a quilt from our 2019 quilt block contest. We'll auction off the quilt on Saturday, Sept. 18 at 3:30 p.m. at Peoples Bank and Trust Arena. For more information, email nancy.j.schmutz@ks.gov.



THE GREAT PUMPKIN



Pumpkins come in all shapes and sizes — but at the Kansas State Fair, it's all about the weight. The heaviest pumpkin receives a \$700 prize and a champion rosette. We're even upping the ante, this year! If anyone can beat the 1,034-pound record set by Donovan Mader in 2015, we'll throw in an extra \$100. The giant pumpkin remains a favorite attraction in the Pride of Kansas Building. *Sponsored by Elliott Mortuary.*

Barn quilts will be on display at the Domestic Arts Building for all fairgoers to enjoy and even judge! That's right, fairgoers will get the chance to participate in "People's Choice" judging. The Champion Barn Quilt will be announced during the auction on Saturday, Sept. 18 at Peoples Bank & Trust Arena beginning at 3:30 p.m. *Sponsored by Tailored Roofing & Remodeling.*

BARN QUILTS



Ice Cream at the

Kansas Dairy Association DAIRY BAR

CELEBRATE KANSAS 2021

Nex-Tech Wireless Grandstand
Serving Daily 10am-10pm

Brought to you by the Dairy Farmers of Kansas





HOW OLD IS THE GOVERNOR'S COOKIE JAR CONTEST?

We know it goes back to at least 1942 when 16-year-old Alberta King took the top prize and presented her winning jar to Governor Payne Ratner. That same year, women entered many of the Fair's competitions using honey or a sugar substitute in their baking, due to the World War II-Era sugar shortage.

GOVERNOR'S COOKIE JAR

One of the most coveted competitions in the Domestic Arts Building is the Governor's Cookie Jar. Contestants decorate a cookie jar to fit a particular theme and fill it with an assortment of cookies. The champion presents the cookie jar to the Governor.

Sponsored by Hutchinson Chamber of Commerce

THANKS *to* OUR COMPETITION SPONSORS

FINE ARTS

Sunflower Woodworkers Guild
Custom Art by Gene
Great Plains Wood Carvers
Kuykendall Family
Kindra McGuire
Whiteman | Realtor, Plaza Astle
Les Hastings
Custom Furniture
Military Order of the Cootie & Auxiliary
McPherson China Highlights
Hiller, Inc.
Kansas Wheat Commission
Kiwanis Club of Hutchinson

AGRICULTURE

Kansas Wheat Commission
Kansas Corn Grower's Assoc.
Kansas Forage & Grasslands Council
Kansas Honey Producers
Kansas Soybean Assoc.

Kansas Sunflower Commission

FLORICULTURE

Hutchinson Horticulture Club

PRO ARTS

Hutchinson Art Assoc.
Peirce Family

FOODS

Apron Strings
Garden Complements
Kansas Soybean Commission
Stafford County Flour Mill
Kansas Wheat Commission
Grain Craft
The Bread Basket

TEXTILES

Sew in 2 Quilts

For more information about the Fair's many Competitive Exhibit categories, visit: KansasStateFair.com and click on Competitions. Entry deadline is July 25. A late fee is applied to entries after this date.



PROFESSIONAL ARTS

Come see the Fair's Professional Arts galleries! Professional art exhibits are now located in the buildings north of Lake Talbott across from the 4-H Centennial Hall.

EXTRA \$200 OFF

WHEN YOU SHOW THIS AD

HOT TUBS • POOLS • SWIM SPAS • FURNITURE

Coupon good at the Kansas State Fair Booth (102 Grandstand Ave). Applicable at fairgrounds only. Minimum purchase \$3,500. Applies towards furniture, hot tubs, Endless Pools, above ground pools. See booth for details.

Hot Tubs • Pools • Patio Furniture • Grills • Saunas • Billiards • Pool Liner Replacements



WEST WICHITA: 8100 W. Kellogg • 316.722.4308

EAST WICHITA: 2431 N. Greenwich Rd, Suite 113 in front of Cabella's • 316.681.3011

DERBY:

1936 N. Rock Rd • 316.788.1122 ultramodern.com

LIVESTOCK *and the* GRAND DRIVE



KANSANS WITH SPECIAL NEEDS SHOW LIVESTOCK IN NEW STATE FAIR COMPETITION

Last year, for the first time in Grand Drive history, special needs athletes had their own competition in the show ring – complete with judges, cameras and purple ribbons.

The Kansas State Fair is partnering with Special Olympics Kansas to once again put on the Champion Livestock Show. The competition takes place at 1:30 p.m. Friday, Sept. 10.

Ten athletes will be selected by Special Olympics and paired with 4-H or FFA members to show a meat goat. The Fair will select exhibitor mentors based on show experience and involvement in the Grand Drive.

The athletes will have time to work with their mentor and animal the morning of the event.

"We hope that this event builds connections between exhibitors and athletes as they work together to learn how to show animals, as well as present in front of a judge what they have learned from the experience," said Jenn Galloway, Competitions Director.

The event will be broadcasted online by Walton Webcasting for those not able to attend. It is sponsored by Cargill Protein and Key Industries.

COMPETITIONS *you don't want to miss*

We've leapt forward in quality livestock events over the years. Here are some highlights to explore at this year's Fair:

- ♦ **MUSTANG DAYS:** Youth train untamed yearlings in the Wild Horse Youth Challenge. They work to gentle the Bureau of Land Management wild horses over the summer then demonstrate their training skills. See our app for this year's schedule - Sept. 12 and 13. They will be auctioned on Sunday after the show.
- ♦ **MOUNTED SHOOTING:** Participants ride a course on horseback while shooting balloons with revolvers. On Tues., Sept. 14, demos will be from 9 a.m. to 4 p.m.; competition to follow.
- ♦ **GRAND DRIVE:** FFA and 4-H youth from across the state compete to be the best of the best in this premier livestock competition. The Drive on Sat., Sept. 11 features the winners of the market beef, sheep, swine and goat shows. Breeding shows will be exhibited on Sunday.
- ♦ **LLAMAS:** These llama's don't want drama, they just want you to come watch as their exhibitors show them off. Classes include: halter, wool, performance and a costume class. The show is Sat. and Sun., Sept 18 & 19!



THANK YOU!

◆ LIVESTOCK SPONSORS ◆



H&H SHOW SUPPLIES
DEWEZE
COUNTRYSIDE FEED
ORSCHLEN HOME & FARM
B&W TRAILER HITCHES
MARVIN & CINDY ALLEN
WARRIORS FARMS
FARM BUREAU - LARRY GLEUE
ASTRA BANK

DILLONS
CUMMINGS CAROUSEL
HIGH PLAINS JOURNAL
HIGH NOON FEED
HIGH CALL OUTFITTERS
JACKSON MEAT
KATTLE ENERGY & KINETIC ELITE
TITAN WEST
YODER MEATS



Now Hiring!

www.landoll.com/careers

1900 North Street | Marysville, KS 66508 | Ph: 785-562-5381

QUALITY PRODUCTS

QUALITY EMPLOYMENT

QUALITY OF LIFE

Career Opportunities Available!

Consider Joining our World Class Team

And Great Benefits For Your Future!

EEO: VET AND DISABILITY



HELPING
KANSAS
FEED THE WORLD

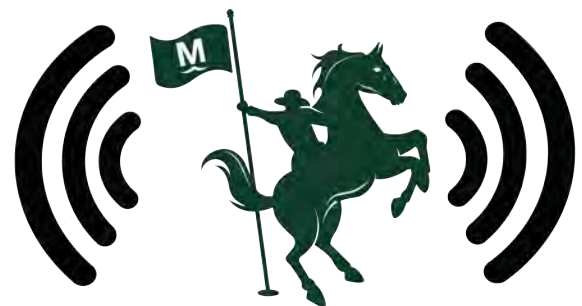


As a member of the Kansas agricultural community, Cargill nurtures relationships with Kansas farmers, ranchers and others involved with nourishing people, animals and the planet in safe, responsible and sustainable ways.

Cargill's presence in Kansas contributes more than 4,000 jobs in a dozen communities. Our operations include beef processing, livestock and poultry feed production, grain marketing, salt for water conditioning products and other similar uses, plant-based edible oils and a joint venture to produce milled grain items such as flour.

Learn more about the impact of Kansas agriculture at Cargill.com/Kansas.

Supporting agricultural partnerships through Kansas Livestock Association is just another example of how **Merck Animal Health Works.**



Crazy
Communications



2021 ♦ ♦ ♦ ♦ ♦ GRANDSTAND SERIES

NEXTECH[®]
wireless



\$20-\$50

**NEX-GEN
BULL RIDING TOUR**

FRI, SEPT. 10 ♦ 7:30PM



\$5-\$35

**MOTO MADNESS
& THRILL SHOW**

SAT, SEPT. 11 ♦ 5:00PM



\$5-\$35

**ALL STAR
MONSTER TRUCKS**

SUN, SEPT. 12 ♦ 3:00PM



\$10 GEN. ADMISSION
12 AND UNDER FREE

DEMO DERBY

MON, SEPT. 13 7:30PM



\$20-\$45

**TRACY LAWRENCE
and
LOGAN MIZE**

TUE, SEPT. 14 ♦ 7:30PM



\$20-\$50

NEWSBOYS
ADAM AGEE

WED, SEPT. 15 ♦ 7:30PM



\$20-\$45

38 SPECIAL

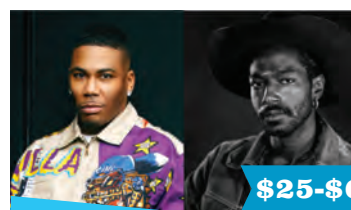
THU, SEPT. 16 ♦ 7:30PM



\$25-\$65

CHRIS JANSON

FRI, SEPT. 17 ♦ 7:30PM



\$25-\$65

NELLY
WILLIE JONES

SAT, SEPT. 18 ♦ 2:00PM



\$20-\$65

**DARCI LYNNE
FARMER**

SUN, SEPT. 19 ♦ 3:00PM

TICKET OFFICE 620-669-3618

2000 N. POPLAR ST. HUTCHINSON, KS

♦ **KANSASSTATEFAIR.COM** ♦

FREE FUN *on the* STAGE

Experience the best concert value of the summer on the Kansas State Fair's free stages!

Peoples
Bank and Trust
ARENA



HUTCHINSON
REGIONAL HEALTHCARE SYSTEM
STAGE at LAKE TALBOTT

MOVING *to a* BIGGER STAGE

PRONTO PUP EATING CONTEST

Here's an excuse to eat all the Pronto Pups you physically can in 10 minutes. And we're giving out awesome prizes! Contestants receive a T-shirt and all the Pronto Pups you can eat. Don't want to participate? Come down and watch the action!

Go to kansassatefair.com and click on Entertainment to enter.

12:00 P.M., Sunday, Sept. 19 at Peoples Bank and Trust Arena.
Sponsored by D&J Pronto Pup

ARM WRESTLING CHAMPIONSHIP

Test your strength at the Grand Prix of Arm Wrestling! The AUSA will hold and conduct, in accordance with its rules and regulations, The Kansas Arm Wrestling Championships called "The Event."

Go to kansassatefair.com and click on Entertainment to register.

2:00 P.M., Sunday, Sept. 12 at the Hutchinson Regional Healthcare System Stage at Lake Talbott.



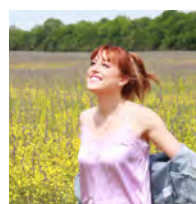
RON DIAMOND

Our beloved entertainer is back for his 16th year at the Fair! Diamond performs daily at the Peoples Bank and Trust Arena. See the daily schedule for times.



FRIDAY, SEPT. 10 KANSAS CITY ROCK BAND QUITE FRANKLY

Performance on Friday, Sept. 1, at 7:30 p.m. at Peoples Bank and Trust Arena.



MONDAY, SEPT. 13 THE VOICE'S CASI JOY

Performance on Monday, Sept. 13, at 5:30 p.m. at Peoples Bank and Trust Arena.



TUESDAY, SEPT. 14 & SATURDAY, SEPT. 18 SASSANACHS

Performances at Peoples Bank and Trust Arena at 4 and 5 p.m. on Tuesday, Sept. 15, and 1 p.m. on Saturday, Sept. 18.



TUESDAY, SEPT. 14 AMERICAN IDOL CONTESTANT MAKAYLA BROWNLEE

Performance on Tuesday, Sept. 15 at 2 p.m. at Peoples Bank and Trust Arena. Also singing the National Anthem before the Logan Mize & Tracy Lawrence grandstand concert.



FRIDAY, SEPT. 17 PETERSON FARM BROTHERS

Performances at Peoples Bank and Trust Arena: The brothers will do a special educational show at 10 a.m. followed by a concert at 6 p.m. on Friday, Sept. 17. Sponsored by Dish.



CHAYCE BECKHAM 2021 AMERICAN IDOL WINNER

7:30 P.M. SAT., SEPT. 18



PEOPLES BANK AND TRUST ARENA

Sponsored by
AT&T

FREE PUBLIC PARKING LOT A

FREE PUBLIC PARKING LOT B

25TH AVE

24TH AVE

23RD AVE

22ND AVE

21ST AVE

20TH AVE

19TH AVE



STATE FAIR ROAD



YELLOW PARK
(PERMIT REQUIRED)

GREEN PARKING
(PERMIT REQUIRED)

GREEN PARKING
(PERMIT REQUIRED)

ENCAMPMENT
BUILDING

AGRICULTURE
EDUCATION
EXHIBITS

YELLOW PARKING
(PERMIT REQUIRED)

4-H CENTENNIAL
HALL

CHAMPION
ANIMAL EXHIBIT

PIG RACES
BISON ARENA



PROFESSIONAL
ARTS

LAKE TALBOTT

HUTCHINSON
REGIONAL HEALTHCARE
SYSTEM STAGE

KANSAS
SHOWCASE

SUNFLOWER
NORTH
BUILDING

LAKE TALBOTT AVE

HONEYBEE LANE

DOMESTIC ARTS
BUILDING

RED PARKING
(PERMIT REQUIRED)

GIANT SLIDE

KS HIGHWAY
PATROL

KS LOTTERY

SUNFLOWER
SOUTH
BUILDING

COTTONWOOD AVE

STATE FAIR MUSEUM

LAIR WHITE
HOUSE

DILLONS
HISTORICAL
CENTER

YE OLD MILL

COTTONWOOD
COURT

MEADOWLARK
BUILDING

WHEAT STATE LANE

PEOPLES BANK
AND TRUST ARENA

KDWPT
AQUARIUM
EISENHOWER

LAIR STECKLINE
FOUNTAIN

STATE FAIR
MERCHANDISE

HOUSE OF
CAPPER

RESERVED BLUE PARKING
(PERMIT REQUIRED)

REMEMBERING
OUR FALLEN FROM KS
BUTTER SCULPTURE
PRIDE OF
KANSAS BUILDING

TRAIN DEPOT
ADMIN OFFICE

GOTTSCALK
PARK

NINJA
EXPERIENCE

AD ASTRA
PAVILION

RABBIT/POULTRY

PRIME BLUE
PARKING
(PERMIT REQUIRED)



STAFF PARKING
(PERMIT REQUIRED)

GATE 1

DAIRY
TIE BARN

MILKING
PARLOR

PRAIRIE
PAVILLION

LIVESTOCK
ANNEX

BIRTHING
CENTER



PURPLE PARKING
(PERMIT REQUIRED)

MOO U
BARN TOURS

SUNDAY'S
HANDWASH
STATION

FEED BARN

THE Bobcat CORRAL

Come see us at
Lake Talbot Road
& Fort Hays Blvd.
WHITE STAR

WHITE
PARKING
(PERMIT REQUIRED)

N POPLAR ST

19TH AVE

MIDWAY RIDES & ATTRACTIONS

LOW PARKING
(PERMIT REQUIRED)

GATE
7

**MAINTENANCE
SHOP**



Actions

TAN PARKING
(PERMIT REQUIRED)

GATE
8

TAN PARKING
(PERMIT REQUIRED)

POW EXPRESS ROUTE



**PETTING
ZOO**

**SUNDAY'S
HANDWASHING
STATION**

**SHEEP, SWINE,
& GOATS
.....
CREDENTIAL
OFFICE**

**EXPO
CENTER**

EXPO II

HORSE BARN

GATE
10

23RD AVE



PLUM ST

FREE PUBLIC PARKING LOT C

**MEDIA AND
VIP PARKING**



WILL CALL

PLUM ST

NORMAN RD



KANSAS STATE FAIR

2021 FAIRGROUNDS MAP



**ENTRANCE
GATES**

PURCHASE TICKETS HERE:
1 • 3 • 4 • 5 • 7 • 8 • 9
DRIVE ENTRANCE ONLY:
2 • 6 • 10 • 11



GRANDSTAND TICKETS



INFORMATION



ATM MACHINES



ADA ACCESSIBLE PARKING



TRAM ROUTE



TRAM STOP



SPECIAL ATTRACTIONS



FIRST AID



SMOKING AREA



POLLINATOR GARDENS



PUBLIC RESTROOMS



NURSING MOTHERS' ROOMS



EDUCATION CENTER

EXPLORE KANSAS FESTIVAL

HIGHLIGHTING KANSAS CULTURE, HISTORY AND ATTRACTIONS



LOCATION:
OZ BUILDING



SATURDAY & SUNDAY
SEPT. 18 & 19
9 AM - 5 PM

Quivira Chapter, Santa Fe Trail Association – Between 1821 and 1880, the Santa Fe Trail connected commerce between Missouri and Santa Fe, New Mexico. With more than half the trail running through Kansas, many remnants still exist. The Quivira Chapter covers 90 miles of the trail through McPherson, Rice, and Barton counties. The trail will celebrate its 200th anniversary this year.

Medicine Lodge – The Medicine Lodge Peace Treaty, signed in 1867 by the U.S. government and five southern plains tribes, has been reenacted here since 1927. Learn more about Barber County's scenic Gyp Hills.

◆ **Caldwell Historical Society** – Gunslingers, saloon girls, and bartenders will help bring to life the wild and woolly western heritage of the Border Queen City and the Chisholm Trail. Caldwell celebrated its 150th anniversary May 7-8, 2021.

Northwest Kansas Travel Council – From fishing lakes, natural wonders like Little Jerusalem and many more unique treasures, get off the interstate and learn about the "off the beaten path" attractions scattered across Northwest Kansas.

Lindsborg – Come get a taste of "Little Sweden" in Lindsborg. Attractions include the Red Barn Studio, Hemslojd-Dala Horse Factory and Coronado Heights.

Boot Hill Museum – Boot Hill Museum is located on the original site of Boot Hill Cemetery. Booth activities include can-can lessons and Boot Hill gunfighters deputizing children.

◆ **Liberal CVB** – What do you get when you combine pancakes, running shoes and friendly community rivalry? You get the International Pancake Race! Learn more about the annual event, along with Dorothy's House and the Mid-America Air Museum. Get your very own spatula for stopping by!

Learn more about Kansas' treasures and communities!

HERE ARE SOME OF THIS YEAR'S EXPLORE KANSAS ATTRACTIONS



NEW ATTRACTION

REMEMBERING *our* FALLEN FROM KANSAS



The 20th Anniversary of September 11th occurs during the 2021 Kansas State Fair. In honor of this, a traveling pictorial State memorial: Remembering Our Fallen from Kansas will be on the fairgrounds for all 10 days of the fair.

This photographic war memorial honors our Kansas' fallen since that tragic day in our nation's history. Unlike brick and mortar memorials, Remembering Our Fallen includes both military and personal photos.

The Exhibit will be located in the Pride of Kansas Building. It is sponsored by Kansas Strong.

"Show me the one you honor and I will know what kind of person you are."

- Thomas Carlyle



*Proudly serving our Kansas communities
for 100 years and counting!*

*Dillons is a brand name, which for us has always been a promise.
A promise made to our associates, customers, and communities served,
to be there for you... to share a family meal... and Feed the Human Spirit.*

Grassroots

Last year we donated
\$2,300,000 to Kansas
communities including food
and funds to support the areas
we call home.



Local

We are proud to sell over
15 million gallons of Kansas
milk in our stores each year.
Our store brand flour is
processed in Kansas flour mills
and Dillons eggs are all laid in
Kansas.



Great Associates

Our associates, over 12,000
strong, generously
pledged over **\$600,000**
to local United Way
organizations for 2021.



Fighting Hunger

In the last five years,
our stores have donated over
6,300,000 Meals through our
industry-leading food rescue program,
Zero Hunger, Zero Waste.

Visit our website at dillons.com/100years as we share our story.



Come visit us in the ***Dillons Centennial Building*** on the fairgrounds
to participate in special activities and take a walk through our history.

Donate \$20 to the Kroger Zero Hunger | Zero Waste Foundation to fight hunger in our
Kansas communities and receive a commemorative Dillons 100th Anniversary book.

CELEBRATING

◆ ◆ ◆ ◆ *our* ◆ ◆ ◆ ◆

SPONSORS



PLATINUM



Dillons Dollar Day and
Dillons Historic Center



Trams



Official Lawnmower
Supplier



Lake Talbott & Gottschalk
Park Entertainment



Education Partner



Ike the Bison &
Official Apparel



Mobile App



Official Tractor &
Gator Provider



Main & Plum Street
Digital Signs



Grandstand

GOLD



Day Sponsor



LED Screens on the Fairgrounds



Legislative Luncheon



Free Concert Last Saturday



Governor's Cookie Jar & Partner on the Patio



Day Sponsor & Partner on the Patio



Grandstand Screens



Partner on the Patio & Signage



Day Sponsor



Arena



Grandstand Screens

SILVER

Aqua Haven
City Beverage - Budweiser
Continental Siding

Cargill Salt
DISH
IdeaTek
Kansas Electric Cooperatives

Leon Global Group - Forever Beauty
Mattress Firm
Nature Hill - NV
Renoir

Tailored Roofing & Remodeling
Ultra Modern Pool & Patio
Verizon - Cellular Sales

BRONZE

American Packaging
Ascension Via Christi Hospitals Wichita, Inc.
Construction Careers Alliance of Kansas
Durham School Services

Elliott Mortuary
Kansas Fairs & Festivals Association
Kansas Lottery
Kansas Strong - Kansas Oil & Natural Gas Producers

Kansas Wesleyan University
Long McArthur Ford
Lutheran Laymens League
Midway Motors
NCRA Productions

Southwest Dairy Farmers
Star Lumber & Leech Adhesives
Propane Marketers Association of Kansas

PARTNERS



Sudsy's Barn

MEDIA PARTNERS

TRACY LAWRENCE AND LOGAN MIZE

KHUT
KWCH

NEWSBOYS

BOTT RADIO
KWCH

38 SPECIAL

KFXJ THE FOX
KSN

CHRIS JANSON

KZSN IHEART
KSN

NELLY

KZCH IHEART
KWCH

DARCY LYNN

KEYN
KWCH

BULL RIDING

KFRM MERIDIAN
MEDIA
KSN

MOTOCROSS

KFRM MERIDIAN
MEDIA
KWCH

MONSTER
TRUCKS

MANN RADIO
KWCH

DEMO DERBY

AD ASTRA
KWCH

FULL 2021 SCHEDULE

SUBJECT TO CHANGE: *most current schedule available on the Kansas State Fair app or at kansasstatefair.com*



We have a lot packed into the 10 days of the fair: demonstrations, competitions, livestock shows, food, thrills, and more!

DAILY EVENTS

ALL DAY SEPT. 10-19

Remembering Our Fallen from Kansas | Pride of Kansas Building
Sean Watson | Fairgrounds
The Strolling Piano | Fairgrounds
Wood Carving Demo | Domestic Arts Building
Llama Exhibit | Dairyland
Sudsy's Barn | Birthing Center
Butter Sculpture | Pride of Kansas
Agriland | Pride of Kansas
Construction Careers Alliance for Kansas | Ad Astra
FFA/4H Exhibit Displays | 4H Centennial Hall, Kansas Showcase
Competitive Exhibits Displays | Oz Gallery, Domestic Arts Building, Lake Talbott East, Lake Talbott West, Pride of Kansas Building

FRIDAY, SEPT. 10

WELCOME BACK!

We're excited to have you at the fair!

8:00 AM Working Equitation | Expo Center & Expo II
10:00 AM Glenda and Mike Ventriloquist and Magic Show | Hutchinson Regional Healthcare System Stage at Lake Talbott
10:30 AM Quilting/Sewing Demo | Domestic Arts Bldg.
11:00 AM 4-H/FFA Meat Goat Showmanship - Sponsored by Midwest Ford | Livestock Annex, Sheep, Swine and Goat Bldg., Prairie Pavilion
11:00 AM Dr. Goddard's Lab | Education Center
11:00 AM Milking Demo | Milking Parlor
11:00 AM Moo U | Birthing Center
11:00 AM Opening Ceremony | Peoples Bank and Trust Arena

11:30 AM Maize High School Select Choir | Peoples Bank and Trust Arena
12:00 PM Dr. Goddard's Lab | Education Center
12:00 PM Draft Horse Show | Expo Center
12:00 PM Milking Demo | Milking Parlor
12:00 PM Moo U | Birthing Center
1:00 PM Bread Sculpture Contest - Judging | Domestic Arts Bldg.
1:00 PM Milking Demo | Milking Parlor
1:00 PM Ron Diamond Hypnotist | Peoples Bank and Trust Arena
01:30 PM Champion Livestock Show - Special Olympic Athlete Event | Livestock Annex
1:30 PM Ninja Experience | Gottschalk Park
2:00 PM 4-H/FFA Swine Showmanship Show - Sponsored by Midwest Ford | Sheep, Swine and Goat Bldg.
2:00 PM Dr. Goddard's Lab | Education Center
2:00 PM Milking Demo | Milking Parlor
2:00 PM Moo U | Birthing Center
2:00 PM Will Simmer | Hutchinson Regional Healthcare System Stage at Lake Talbott
3:00 PM 4-H/FFA Sheep Showmanship Show - Sponsored by Midwest Ford | Sheep, Swine and Goat Bldg.
3:00 PM Alterior Motives | Peoples Bank and Trust Arena
3:00 PM Homemade Ice Cream & Topping Contest Judging | Domestic Arts Bldg.
3:00 PM INSTEP | Hutchinson Regional Healthcare System Stage at Lake Talbott
3:00 PM Moo U | Birthing Center
3:30 PM 4-H/FFA Beef Showmanship - Sponsored by Midwest Ford | Prairie Pavilion
4:00 PM Fused Glass Demos | Domestic Arts Bldg.
4:00 PM Moo U | Birthing Center

4:00 PM The Parr Family | Hutchinson Regional Healthcare System Stage at Lake Talbott
5:00 PM Draft Horse Parade | Expo Center
5:00 PM INSTEP | Hutchinson Regional Healthcare System Stage at Lake Talbott
5:00 PM Moo U | Birthing Center
5:00 PM Sister Sarah Tree | Peoples Bank and Trust Arena
6:00 PM Draft Horse Hitch Show | Expo Center
6:00 PM Milking Demo | Milking Parlor
6:00 PM Mutton Bustin | Nex-Tech Wireless Grandstand
6:00 PM Ninja Experience | Gottschalk Park
6:00 PM Ron Diamond Hypnotist | Peoples Bank and Trust Arena
6:00 PM The Parr Family | Hutchinson Regional Healthcare System Stage at Lake Talbott
7:00 PM Tropical Shores | Hutchinson Regional Healthcare System Stage at Lake Talbott
7:30 PM Nex Gen Bull Riding | Nex-Tech Wireless Grandstand
7:30 PM Quite Frankly | Peoples Bank and Trust Arena



SATURDAY, SEPT. 11

SPONSORED BY:



- 8:00 AM** 4-H/FFA & Open Poultry Show | Poultry Bldg.
- 8:00 AM** 4-H/FFA Beef Market Show | Prairie Pavilion
- 8:00 AM** 4-H/FFA Meat Goat Market Show | Livestock Annex
- 8:00 AM** 4-H/FFA Sheep Market Show | Sheep, Swine and Goat Bldg.
- 8:00 AM** 4-H/FFA Swine Market Show | Sheep, Swine and Goat Bldg.
- 9:00 AM** Moo U | Birthing Center
- 10:00 AM** Dr. Goddard's Lab | Education Center
- 10:00 AM** Glenda and Mike Ventriloquist and Magic Show | Hutchinson Regional Healthcare System Stage at Lake Talbott
- 10:00 AM** Milking Demo | Milking Parlor
- 10:00 AM** Moo U | Birthing Center
- 10:00 AM** 4-H Presentations | 4H Centennial Hall
- 10:30 AM** Mother/Daughter Quilting Demo | Domestic Arts Bldg.
- 11:00 AM** Dr. Goddard's Lab | Education Center
- 11:00 AM** Kansas Kountree Kloggers | Hutchinson Regional Healthcare System Stage at Lake Talbott
- 11:00 AM** Milking Demo | Milking Parlor
- 11:00 AM** Moo U | Birthing Center
- 11:00 AM** Ninja Experience | Gottschalk Park
- 11:00 AM** WIBW Live Ag Forum | Peoples Bank and Trust Arena
- 12:00 PM** Dr. Goddard's Lab | Education Center
- 12:00 PM** Milking Demo | Milking Parlor
- 12:00 PM** Moo U | Birthing Center

2021 ROVING ACTS

MAGICIAN SEAN WATSON

With over 20 years of magical experience in practically every type of venue, Watson has perfected his skills as a magician and is sure to keep audience members on the edge of their seat.



THE STROLLING PIANO

A revolutionary concept in the world of musical entertainment, this new Fair act combines the classic and sophisticated nature of a pianist/singer with the flexibility of a strolling musician.



◆ ◆ GOTTSCHALK PARK FEATURE ◆ ◆ NINJA EXPERIENCE

Prepare yourself for high-flying action with the Ninja Experience! This show takes everyone's favorite obstacle-course TV show and brings it live and in person with hilarious commentary and an intense course that includes a 15-foot warped wall! Stick around after the show and break boards with the ninjas. Sponsored by Hutchinson Regional Healthcare System.

- 12:00 PM** The Parr Family | Hutchinson Regional Healthcare System Stage at Lake Talbott
- 12:30 PM** Quick & Easy Contest - Judging | Domestic Arts Bldg.
- 1:00 PM** Milking Demo | Milking Parlor
- 1:00 PM** Celebrity Grape Stomp | Hutchinson Regional Healthcare System Stage at Lake Talbott
- 1:00 PM** Legislative Showmanship | Prairie Pavilion
- 1:00 PM** Ron Diamond Hypnotist | Peoples Bank and Trust Arena
- 1:30 PM** Ninja Experience | Gottschalk Park
- 2:00 PM** Dr. Goddard's Lab | Education Center
- 2:00 PM** Milking Demo | Milking Parlor
- 2:00 PM** Moo U | Birthing Center
- 2:00 PM** 4-H/FFA Breeding Beef Show | Prairie Pavilion
- 2:00 PM** Draft Horse Costume Show | Expo Center
- 2:00 PM** The Church Ladies - Unsupervised | Hutchinson Regional Healthcare System Stage at Lake Talbott
- 2:30 PM** Keefer Madness | Peoples Bank & Trust Arena
- 3:00 PM** Moo U | Birthing Center
- 3:00 PM** Hutchinson Brass Quintet | Hutchinson Regional Healthcare System Stage at Lake Talbott
- 4:00 PM** Moo U | Birthing Center

- 4:00 PM** Draft Horse - Team Pull Contest | Expo Center
- 4:00 PM** Decorative Arts Demos | Domestic Arts Bldg.
- 4:00 PM** Fused Glass Demos | Domestic Arts Bldg.
- 4:00 PM** Holy Cross Catholic Church Service | Encampment Bldg. - Hansen Auditorium
- 4:00 PM** INSTEP | Hutchinson Regional Healthcare System Stage at Lake Talbott
- 5:00 PM** Moo U | Birthing Center
- 5:00 PM** Moto Madness & Thrill Show | Nextech Wireless Grandstand
- 5:00 PM** Ron Diamond Hypnotist | Peoples Bank and Trust Arena
- 5:00 PM** The Church Ladies - Unsupervised | Hutchinson Regional Healthcare System Stage at Lake Talbott
- 6:00 PM** Milking Demo | Milking Parlor
- 6:00 PM** Grand Drive Champion Selection | Prairie Pavilion
- 6:00 PM** Hutchinson Brass Quintet | Hutchinson Regional Healthcare System Stage at Lake Talbott
- 6:00 PM** Plein Aire Art Contest Awards | Lake Talbott East, Lake Talbott West
- 6:30 PM** 35th Infantry Division Band | Peoples Bank and Trust Arena
- 6:30 PM** Draft Horse Riding & Hitch | Expo Center
- 6:30 PM** Ninja Experience | Gottschalk Park



SUNDAY, SEPT. 12

SPONSORED BY:



- 8:00 AM** 4-H/FFA Breeding Beef Show | Prairie Pavilion
- 8:00 AM** 4-H/FFA Breeding Doe Show | Livestock Annex
- 8:00 AM** 4-H/FFA Breeding Sheep Show | Sheep, Swine and Goat Bldg.
- 8:00 AM** 4-H/FFA Breeding Swine Show | Sheep, Swine and Goat Bldg.
- 9:00 AM** Moo U | Birthing Center
- 9:30 AM** Rub-A-Dub-Dub What's in the Tub? | Agriculture Ed. Exhibit Bldg.
- 10:00 AM** Dr. Goddard's Lab | Education Center
- 10:00 AM** Glenda and Mike Ventriloquist and Magic Show | Hutchinson Regional Healthcare System Stage at Lake Talbott
- 10:00 AM** Milking Demo | Milking Parlor
- 10:00 AM** Moo U | Birthing Center
- 10:00 AM** 4-H Presentations | 4H Centennial Hall
- 10:00 AM** Draft Horse Obstacle Show | Expo Center
- 10:00 AM** Sunday Worship Lutheran Laymen's League | Peoples Bank and Trust Arena
- 11:00 AM** Dr. Goddard's Lab | Education Center
- 11:00 AM** Milking Demo | Milking Parlor
- 11:00 AM** Moo U | Birthing Center
- 11:00 AM** Ninja Experience | Gottschalk Park
- 11:00 AM** Haven Alexandra | Peoples Bank & Trust Arena
- 11:30 AM** Rub-A-Dub-Dub What's in the Tub? | Agriculture Ed. Exhibit Bldg.
- 12:00 PM** Dr. Goddard's Lab | Education Center
- 12:00 PM** Milking Demo | Milking Parlor
- 12:00 PM** Moo U | Birthing Center
- 12:00 PM** INSTEP | Hutchinson Regional Healthcare System Stage at Lake Talbott
- 12:30 PM** Stafford Flour Mills Biscuit Bake-Off | Domestic Arts Bldg.
- 1:00 PM** Milking Demo | Milking Parlor
- 1:00 PM** Artistic Drawing Skills Demo | Domestic Arts Bldg.
- 1:00 PM** Pedal Pull Championships | Peoples Bank and Trust Arena
- 1:00 PM** Quarter Horse Versatility | Expo II
- 1:00 PM** Haven Alexandra | Hutchinson Regional Healthcare System Stage at Lake Talbott

- 01:30 PM** Ninja Experience | Gottschalk Park
- 2:00 PM** Dr. Goddard's Lab | Education Center
- 2:00 PM** Milking Demo | Milking Parlor
- 2:00 PM** Moo U | Birthing Center
- 2:00 PM** Arm Wrestling | Hutchinson Regional Healthcare System Stage at Lake Talbott
- 2:00 PM** Grabbing Some Grub! | Agriculture Ed. Exhibit Bldg. , FFA Agricultural Exhibit Area
- 2:00 PM** Hutchinson Sewing Guild Demo | Domestic Arts Bldg.
- 3:00 PM** Moo U | Birthing Center
- 3:00 PM** All-Star Monster Trucks | Nex-Tech Wireless Grandstand
- 4:00 PM** Moo U | Birthing Center
- 5:00 PM** Moo U | Birthing Center
- 5:00 PM** Ron Diamond Hypnotist | Peoples Bank and Trust Arena
- 5:30 PM** 4-H/FFA Dairy Cattle Showmanship Show | Prairie Pavilion
- 6:00 PM** Milking Demo | Milking Parlor
- 6:00 PM** Caitlyn Ochsner | Peoples Bank and Trust Arena
- 6:00 PM** Damaris Kunkler | Hutchinson Regional Healthcare System Stage at Lake Talbott
- 6:00 PM** Jersey & Holstein Dairy Cattle Show | Prairie Pavilion
- 6:30 PM** Ninja Experience | Gottschalk Park
- 6:30 PM** Rub-A-Dub-Dub What's in the Tub? | Agriculture Ed. Exhibit Bldg.
- 7:00 PM** Jenna & Martin | Hutchinson Regional Healthcare System Stage at Lake Talbott
- 7:00 PM** Ron Diamond Hypnotist | Peoples Bank and Trust Arena

MONDAY, SEPT. 13



DILLONS DOLLAR DAY

Gate admission is just \$1 or get in free with a Dillon's Plus Card! One person admitted per card.

- ALL DAY** Marching Band Competition | Peoples Bank and Trust Arena & Fairgrounds
- 9:00 AM** Moo U | Birthing Center
- 9:00 AM** Basics of Electricity and Electrical Safety Demo | Ad Astra Bldg.
- 9:00 AM** Quarter Horse Versatility | Expo Center & Expo II
- 9:30 AM** Rub-A-Dub-Dub What's in the Tub? | Agriculture Ed. Exhibit Bldg.
- 10:00 AM** Dr. Goddard's Lab | Education Center
- 10:00 AM** Glenda and Mike Ventriloquist and Magic Show | Hutchinson Regional Healthcare System Stage at Lake Talbott
- 10:00 AM** Milking Demo | Milking Parlor
- 10:00 AM** Moo U | Birthing Center
- 10:00 AM** Pencil/Watercolor Artist Demo | Domestic Arts Bldg.
- 10:30 AM** Knitting/Crochet Demo | Domestic Arts Bldg.

MAKE CHANGE, NOT



EXCUSES.



Visit our State Fair Booth:
#100 Wheat State Lane

Burlington Welding, LLC
1101 Industrial Blvd
Cherokee, OK 73728

Phone: 580-596-3381
Fax: 580-596-2059
Email: diamondwcorrals@yahoo.com

Diamond W Corral

Chute and Alleyway - Patent Pending

Cattle Box - Patent Pending

Diamond W Corrals
www.diamondwcorrals.com
Check us out on Facebook and YouTube

- 10:30 AM** Quilting/Crocheting Demo | Domestic Arts Bldg.
- 11:00 AM** Dr. Goddard's Lab | Education Center
- 11:00 AM** Milking Demo | Milking Parlor
- 11:00 AM** Moo U | Birthing Center
- 11:00 AM** Ninja Experience | Gottschalk Park
- 11:30 AM** Rub-A-Dub-Dub What's in the Tub? | Agriculture Ed. Exhibit Bldg.
- 12:00 PM** Dr. Goddard's Lab | Education Center
- 12:00 PM** Milking Demo | Milking Parlor
- 12:00 PM** Moo U | Birthing Center
- 12:00 PM** Sam Cox Band | Hutchinson Regional Healthcare System Stage at Lake Talbott
- 1:00 PM** Milking Demo | Milking Parlor
- 1:00 PM** Damaris Kunkler | Hutchinson Regional Healthcare System Stage at Lake Talbott
- 1:30 PM** Ninja Experience | Gottschalk Park
- 2:00 PM** Dr. Goddard's Lab | Education Center
- 2:00 PM** Milking Demo | Milking Parlor
- 2:00 PM** Moo U | Birthing Center
- 2:00 PM** Air Fryer Demo | Domestic Arts Bldg.
- 2:00 PM** Grabbing Some Grub! | Agriculture Ed. Exhibit Bldg., FFA Agricultural Exhibit Area
- 2:00 PM** Jenna & Martin | Hutchinson Regional Healthcare System Stage at Lake Talbott
- 3:00 PM** Moo U | Birthing Center
- 3:00 PM** INSTEP | Hutchinson Regional Healthcare System Stage at Lake Talbott
- 3:00 PM** Sam Cox Band | Peoples Bank and Trust Arena
- 4:00 PM** Moo U | Birthing Center
- 4:00 PM** Fused Glass Demos | Domestic Arts Bldg.

- 4:00 PM** Jenna & Martin | Hutchinson Regional Healthcare System Stage at Lake Talbott
- 4:00 PM** Ron Diamond Hypnotist | Peoples Bank and Trust Arena
- 5:00 PM** Moo U | Birthing Center
- 5:00 PM** Damaris Kunkler | Hutchinson Regional Healthcare System Stage at Lake Talbott
- 5:30 PM** Casi Joy | Peoples Bank and Trust Arena
- 6:00 PM** Milking Demo | Milking Parlor
- 6:00 PM** Mariachi Los Reyes | Hutchinson Regional Healthcare System Stage at Lake Talbott
- 6:30 PM** Ninja Experience | Gottschalk Park
- 6:30 PM** Rub-A-Dub-Dub What's in the Tub? | Agriculture Ed. Exhibit Bldg.
- 7:00 PM** Ron Diamond Hypnotist | Peoples Bank and Trust Arena
- 7:30 PM** Demolition Derby | Nex-Tech Wireless Grandstand

TUESDAY, SEPT. 14

TASTY TUESDAY

\$2.00 concessions at participating vendors! Find new favorites, try something different or introduce your favorites to your friends.

4 AFTER 4

Get in for \$4 after 4 P.M. with this evening deal!

- ALL DAY** Marching Band Competition | Peoples Bank and Trust Arena & Fairgrounds
- 9:00 AM** Moo U | Birthing Center
- 9:00 AM** Basics of Electricity and Electrical Safety Demo | Ad Astra Bldg.
- 9:00 AM** Debate Showcase | Encampment Bldg. - Hansen Auditorium
- 9:00 AM** Cowboy Mounted Shooting Demo | Expo II

- 9:00 AM** Miniature Horse Show | Expo II
- 9:30 AM** Rub-A-Dub-Dub What's in the Tub? | Agriculture Ed. Exhibit Bldg.
- 10:00 AM** Dr. Goddard's Lab | Education Center
- 10:00 AM** Glenda and Mike Ventriloquist and Magic Show | Education Center
- 10:00 AM** Milking Demo | Milking Parlor
- 10:00 AM** Moo U | Birthing Center
- 10:00 AM** Pencil/Watercolor Artist Demo | Domestic Arts Bldg.
- 10:00 AM** Open Sheep Show | Sheep, Swine and Goat Bldg.
- 10:30 AM** Cowboy Mounted Shooting Demo | Expo II
- 10:30 AM** Knitting/Crochet Demo | Domestic Arts Bldg.
- 11:00 AM** Dr. Goddard's Lab | Education Center
- 11:00 AM** Milking Demo | Milking Parlor
- 11:00 AM** Moo U | Birthing Center
- 11:00 AM** Ninja Experience | Gottschalk Park
- 11:30 AM** Demo- "Cooking with Soybeans" | Domestic Arts Bldg.
- 11:30 AM** Rub-A-Dub-Dub What's in the Tub? | Agriculture Ed. Exhibit Bldg.
- 12:00 PM** Dr. Goddard's Lab | Education Center
- 12:00 PM** Milking Demo | Milking Parlor
- 12:00 PM** Moo U | Birthing Center
- 12:00 PM** Fun Crafting Demo | Domestic Arts Bldg.
- 12:00 PM** Nickerson High School Madrigals | Peoples Bank and Trust Arena
- 12:00 PM** Cowboy Mounted Shooting Demo | Expo II
- 12:00 PM** Salt City Cowboy Church | Hutchinson Regional Healthcare System Stage at Lake Talbott
- 1:00 PM** Milking Demo | Milking Parlor
- 1:00 PM** Salt City Cowboy Church | Hutchinson Regional Healthcare System Stage at Lake Talbott

- 1:30 PM** Ninja Experience | Gottschalk Park
- 2:00 PM** Dr. Goddard's Lab | Education Center
- 2:00 PM** Milking Demo | Milking Parlor
- 2:00 PM** Moo U | Birthing Center
- 2:00 PM** Grabbing Some Grub | Agriculture Ed. Exhibit Bldg., FFA Agricultural Exhibit Area
- 2:00 PM** INSTEP | Hutchinson Regional Healthcare System Stage at Lake Talbott
- 2:00 PM** Makayla Brownlee | Peoples Bank and Trust Arena
- 3:00 PM** Moo U | Birthing Center
- 3:00 PM** Cowboy Mounted Shooting Demo | Expo II
- 4:00 PM** Moo U | Birthing Center
- 4:00 PM** \$4 after 4 | Fairgrounds



- 4:00 PM** 4Given | Hutchinson Regional Healthcare System Stage at Lake Talbott
- 4:00 PM** Cowboy Mounted Shooting Competition | Expo II
- 4:00 PM** Sassanachs | Peoples Bank and Trust Arena
- 5:00 PM** Moo U | Birthing Center
- 5:00 PM** INSTEP | Hutchinson Regional Healthcare System Stage at Lake Talbott
- 5:00 PM** Sassanachs | Peoples Bank and Trust Arena
- 6:00 PM** Milking Demo | Milking Parlor
- 6:00 PM** 4Given | Hutchinson Regional Healthcare System Stage at Lake Talbott
- 6:30 PM** Ninja Experience | Gottschalk Park
- 6:30 PM** Rub-A-Dub-Dub What's in the Tub? | Agriculture Ed. Exhibit Bldg.
- 7:00 PM** Jake Gill | Peoples Bank and Trust Arena
- 7:00 PM** Ryan Shaban | Hutchinson Regional Healthcare System Stage at Lake Talbott
- 7:30 PM** Tracy Lawrence and Logan Mize | Nex-Tech Wireless Grandstand

WEDNESDAY, SEPT. 15

SHOP 'TIL YOU DROP

Calling all bargain hunters: save on the latest gadgets and other wares! On Wednesday only, participating vendors will offer discounts on selected merchandise.

- ALL DAY** Marching Band Competition | Peoples Bank and Trust Arena & Fairgrounds
- 9:00 AM** Moo U | Birthing Center
- 9:00 AM** Basics of Electricity and Electrical Safety Demo | Ad Astra Bldg.
- 9:00 AM** Veteran's Brunch | Encampment Bldg - Dillon Hall
- 9:30 AM** Grabbing Some Grub! | Agriculture Ed. Exhibit Bldg., FFA Agricultural Exhibit Area
- 9:30 AM** Open Boer Goat Show | Sheep, Swine and Goat Bldg.
- 9:30 AM** Rub-A-Dub-Dub What's in the Tub? | Agriculture Ed. Exhibit Bldg.
- 10:00 AM** Dr. Goddard's Lab | Education Center
- 10:00 AM** Glenda and Mike Ventriloquist and Magic Show | Hutchinson Regional Healthcare System Stage at Lake Talbott
- 10:00 AM** Milking Demo | Milking Parlor
- 10:00 AM** Moo U | Birthing Center
- 10:00 AM** Pencil/Watercolor Artist Demo | Domestic Arts Bldg.
- 10:00 AM** Open Sheep Show | Sheep, Swine and Goat Bldg.
- 10:30 AM** Quilting Demo | Domestic Arts Bldg.
- 11:00 AM** Dr. Goddard's Lab | Education Center
- 11:00 AM** Milking Demo | Milking Parlor
- 11:00 AM** Moo U | Birthing Center
- 11:00 AM** Ninja Experience | Gottschalk Park
- 11:30 AM** Rub-A-Dub-Dub What's in the Tub? | Agriculture Ed. Exhibit Bldg.
- 12:00 PM** Dr. Goddard's Lab | Education Center
- 12:00 PM** Milking Demo | Milking Parlor
- 12:00 PM** Moo U | Birthing Center
- 12:00 PM** Glenn Roth | Hutchinson Regional Healthcare System Stage at Lake Talbott
- 12:00 PM** Invent A Heart Healthy Food Contest | Domestic Arts Bldg.
- 1:00 PM** Milking Demo | Milking Parlor
- 1:00 PM** KattleEnergy Super Cow/Calf Contest | Livestock Annex
- 1:00 PM** Melanie Ryan & Nina Jerke | Hutchinson Regional Healthcare System Stage at Lake Talbott
- 1:30 PM** Ninja Experience | Gottschalk Park
- 2:00 PM** Dr. Goddard's Lab | Education Center

- 2:00 PM** Milking Demo | Milking Parlor
- 2:00 PM** Moo U | Birthing Center
- 2:00 PM** Glenn Roth | Hutchinson Regional Healthcare System Stage at Lake Talbott
- 2:00 PM** Kansas Auctioneers Association Bid Calling Contest | Peoples Bank and Trust Arena
- 3:00 PM** Moo U | Birthing Center
- 3:00 PM** King Arthur Flour Spice Cake Judging | Domestic Arts Bldg.
- 3:00 PM** Melanie Ryan & Nina Jerke | Hutchinson Regional Healthcare System Stage at Lake Talbott
- 4:00 PM** Moo U | Birthing Center
- 4:00 PM** Hutchinson Brass Quintet | Hutchinson Regional Healthcare System Stage at Lake Talbott
- 5:00 PM** Moo U | Birthing Center
- 5:00 PM** Glenn Roth | Hutchinson Regional Healthcare System Stage at Lake Talbott
- 5:00 PM** Ron Diamond Hypnotist | Peoples Bank and Trust Arena
- 6:00 PM** Milking Demo | Milking Parlor
- 6:00 PM** Buhler Singers | Peoples Bank and Trust Arena
- 6:00 PM** Hutchinson Brass Quintet | Hutchinson Regional Healthcare System Stage at Lake Talbott
- 6:30 PM** Ninja Experience | Gottschalk Park
- 6:30 PM** Rub-A-Dub-Dub What's in the Tub? | Agriculture Ed. Exhibit Bldg.
- 7:00 PM** Ron Diamond Hypnotist | Peoples Bank and Trust Arena
- 7:30 PM** Newsboys with Adam Agee | Nex-Tech Wireless Grandstand

THURSDAY, SEPT. 16

4 AFTER 4

Get in for \$4 after 4 P.M. with this evening deal!

- 9:00 AM** Moo U | Birthing Center
- 9:00 AM** Basics of Electricity and Electrical Safety Demo | Ad Astra Bldg.
- 9:00 AM** AOB Beef Show | Prairie Pavilion
- 9:00 AM** Limousin & Lim-Flex Beef Show | Prairie Pavilion
- 9:00 AM** Open Sheep Show | Sheep, Swine and Goat Bldg.
- 9:00 AM** Red Angus Beef Show | Prairie Pavilion
- 9:00 AM** Simmental / Percentage Simmental Beef Show | Prairie Pavilion
- 9:30 AM** Rub-A-Dub-Dub What's in the Tub? | Agriculture Ed. Exhibit Bldg.
- 10:00 AM** Forensics Showcase | Encampment Bldg. - Hansen Auditorium
- 10:00 AM** Dr. Goddard's Lab | Education Center



Bonner Springs
KANSAS

small town fun **BIG CITY ATTRACTIONS**

Exit 224 on I-70
www.bonnerrsprings.org/visit



THE SIDE OF **KANSAS CITY** YOU MAY NOT KNOW

See Kansas City, KS from the eyes of Lewis and Clark.
Admire the Victorian homes in Strawberry Hill.
Uncover historic Kansans at Legends Outlets Kansas City.
Discover the story of KCK you may not know.

VisitKansasCityKS.com



CELEBRATE KANSAS HISTORY IN OLATHE

visitolathe.org |  **OLATHE**
CITY OF OLATHE
CONVENTION &
VISITORS BUREAU

Merriam KANSAS



*Come for a few hours
or spend the day –
and Kansas City's
just minutes away!*

exploremerriam.com



10:00 AM Glenda and Mike Ventriloquist and Magic Show | Hutchinson Regional Healthcare System Stage at Lake Talbott

10:00 AM Milking Demo | Milking Parlor

10:00 AM Moo U | Birthing Center

10:00 AM Pencil/Watercolor Artist Demo | Domestic Arts Bldg.

10:00 AM China Painting Demos | Oz Gallery, Domestic Arts Bldg.

10:00 AM Demo- "Food Safety Tips" | Domestic Arts Bldg.

10:00 AM INSTEP | Peoples Bank and Trust Arena

10:30 AM Quilting Demo | Domestic Arts Bldg.

11:00 AM Tropical Shores | Hutchinson Regional Healthcare System Stage at Lake Talbott

11:00 AM Dr. Goddard's Lab | Education Center

11:00 AM Milking Demo | Milking Parlor

11:00 AM Moo U | Birthing Center

11:00 AM Ninja Experience | Gottschalk Park

11:30 AM Rub-A-Dub-Dub What's in the Tub? | Agriculture Ed. Exhibit Bldg.

12:00 PM Dr. Goddard's Lab | Education Center

12:00 PM Milking Demo | Milking Parlor

12:00 PM Moo U | Birthing Center

12:00 PM Dave Perryman & The Country Revue | Peoples Bank and Trust Arena

12:00 PM Salt City Cowboy Church | Hutchinson Regional Healthcare System Stage at Lake Talbott

1:00 PM Milking Demo | Milking Parlor

1:00 PM Dave Perryman & The Country Revue | Peoples Bank and Trust Arena

1:00 PM Salt City Cowboy Church | Hutchinson Regional Healthcare System Stage at Lake Talbott

1:30 PM Ninja Experience | Gottschalk Park

2:00 PM Dr. Goddard's Lab | Education Center

2:00 PM Milking Demo | Milking Parlor

2:00 PM Moo U | Birthing Center

2:00 PM 4-H Horse Show Halter Classes | Expo Center

2:00 PM Air Fryer Demo | Domestic Arts Bldg.

2:00 PM Grabbing Some Grub! | Agriculture Ed. Exhibit Bldg., FFA Agricultural Exhibit Area

2:00 PM Tropical Shores | Hutchinson Regional Healthcare System Stage at Lake Talbott

3:00 PM Moo U | Birthing Center

3:00 PM Ryan Shaban & the Salt City Jazz Band | Peoples Bank and Trust Arena

3:00 PM Savanna Chesnut | Hutchinson Regional Healthcare System Stage at Lake Talbott

3:30 PM Ryan Shaban & the Salt City Jazz Band | Peoples Bank and Trust Arena

4:00 PM Moo U | Birthing Center

4:00 PM \$4 after 4 | Fairgrounds

4:00 PM Kansas State Fair 1st Annual Pub Crawl | Fairgrounds

5:00 PM Moo U | Birthing Center

5:00 PM Dave Perryman & The Country Revue | Hutchinson Regional Healthcare System Stage at Lake Talbott

6:00 PM Milking Demo | Milking Parlor

6:00 PM Boom Box | Peoples Bank and Trust Arena

6:00 PM INSTEP | Hutchinson Regional Healthcare System Stage at Lake Talbott

6:30 PM Ninja Experience | Gottschalk Park

6:30 PM Rub-A-Dub-Dub What's in the Tub? | Agriculture Ed. Exhibit Bldg.

7:30 PM 38 Special | Nex-Tech Wireless Grandstand



North Star METAL WORKS

620-515-3499

VISIT A SHOWROOM NEAR YOU!

GARDEN CITY | 606 E KANSAS

TOPEKA | 5844 SW HUNTOON

GREAT BEND | 1222 10TH ST

WICHITA | 8033 E DOUGLAS

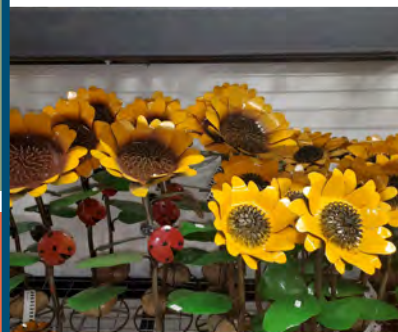
EXCLUSIVE
OFFER

MENTION THIS AD TO RECEIVE
20% OFF YOUR ENTIRE PURCHASE*
+ SPECIAL FINANCING OPTIONS*

Renewal
by Andersen. 
WINDOW REPLACEMENT an Andersen Company

CALL
877-773-0845

*Not valid in combination with any other offer or discount, nor on prior or current sales. Minimum purchase required. *Financing for GreenSky® consumer loan programs is provided by federally insured, federal and state chartered financial institutions without regard to age, race, color, religion, national origin, gender or familial status. *Renewal by Andersen® and all other marks where denoted are trademarks of Andersen Corporation. ©2020 Andersen Corporation. All rights reserved. Renewal by Andersen - Southard Corporation, an independently owned & operated Renewal by Andersen retailer.



FRIDAY, SEPT. 17

- 8:00 AM** 4-H/FFA Horse Show | Expo Center
- 8:00 AM** State 4-H Horse Show | Expo Center & Expo II
- 8:30 AM** Hereford Beef Show | Prairie Pavilion
- 8:30 AM** Shorthorn / Shorthorn Plus Beef Show | Prairie Pavilion
- 9:00 AM** Moo U | Birthing Center
- 9:00 AM** Basics of Electricity and Electrical Safety Demo | Ad Astra Bldg.
- 9:30 AM** Rub-A-Dub-Dub What's in the Tub? | Agriculture Ed. Exhibit Bldg.
- 10:00 AM** Dr. Goddard's Lab | Education Center
- 10:00 AM** Glenda and Mike Ventriloquist and Magic Show | Hutchinson Regional Healthcare System Stage at Lake Talbott
- 10:00 AM** Milking Demo | Milking Parlor
- 10:00 AM** Moo U | Birthing Center
- 10:00 AM** Pencil/Watercolor Artist Demo | Domestic Arts Bldg.
- 10:00 AM** Decorative Arts Demos | Domestic Arts Bldg.
- 10:00 AM** Peterson Farm Brothers | Peoples Bank and Trust Arena
- 11:00 AM** Dr. Goddard's Lab | Education Center
- 11:00 AM** Milking Demo | Milking Parlor
- 11:00 AM** Moo U | Birthing Center
- 11:00 AM** Ninja Experience | Gottschalk Park
- 11:30 AM** Rub-A-Dub-Dub What's in the Tub? | Agriculture Ed. Exhibit Bldg.
- 12:00 PM** Dr. Goddard's Lab | Education Center
- 12:00 PM** Milking Demo | Milking Parlor
- 12:00 PM** Moo U | Birthing Center
- 12:00 PM** 4-H/FFA Open Ayrshire, Brown Swiss, Milking Shorthorn Dairy Cattle | Prairie Pavilion
- 12:00 PM** INSTEP | Hutchinson Regional Healthcare System Stage at Lake Talbott
- 12:00 PM** The Agenda | Peoples Bank and Trust Arena
- 1:00 PM** Milking Demo | Milking Parlor
- 1:00 PM** Alexandra Keller | Hutchinson Regional Healthcare System Stage at Lake Talbott
- 1:00 PM** The Agenda | Peoples Bank and Trust Arena
- 1:30 PM** Ninja Experience | Gottschalk Park
- 2:00 PM** Dr. Goddard's Lab | Education Center
- 2:00 PM** Milking Demo | Milking Parlor
- 2:00 PM** Moo U | Birthing Center
- 2:00 PM** Curley's All Natural Barbecue Sauce Contest - Judging | Domestic Arts Bldg., Education Center

- 2:00 PM** Grabbing Some Grub! | Agriculture Ed. Exhibit Bldg., FFA Agricultural Exhibit Area
- 2:00 PM** INSTEP | Hutchinson Regional Healthcare System Stage at Lake Talbott
- 2:00 PM** Ladies Barrow Swine Show | Sheep, Swine and Goat Bldg.
- 3:00 PM** Moo U | Birthing Center
- 3:00 PM** Alexandra Keller | Peoples Bank and Trust Arena
- 3:00 PM** Anchor Inn Fresh Salsa Contest | Domestic Arts Bldg.
- 3:00 PM** Celebrity Goat Milking | Sheep, Swine and Goat Bldg.
- 3:00 PM** Ruby | Hutchinson Regional Healthcare System Stage at Lake Talbott
- 4:00 PM** Moo U | Birthing Center
- 4:00 PM** Melanie Ryan & Nina Jerke | Hutchinson Regional Healthcare System Stage at Lake Talbott
- 4:00 PM** Ron Diamond Hypnotist | Peoples Bank and Trust Arena
- 5:00 PM** Moo U | Birthing Center
- 5:00 PM** 4-H/FFA Dairy Showmanship | Prairie Pavilion
- 5:00 PM** Melanie Ryan & Nina Jerke | Hutchinson Regional Healthcare System Stage at Lake Talbott
- 6:00 PM** Milking Demo | Milking Parlor
- 6:00 PM** Peterson Farm Brothers | Peoples Bank and Trust Arena
- 6:00 PM** Keefer Madness | Hutchinson Regional Healthcare System Stage at Lake Talbott
- 6:30 PM** Ninja Experience | Gottschalk Park
- 6:30 PM** Rub-A-Dub-Dub What's in the Tub? | Agriculture Ed. Exhibit Bldg.
- 7:00 PM** Milking Shorthorn Dairy Cattle Open & 4-H / FFAShow | Prairie Pavilion
- 7:00 PM** Ron Diamond Hypnotist | Peoples Bank and Trust Arena
- 7:30 PM** Chris Janson | Nex-Tech Wireless Grandstand

- 9:00 AM** Charolais Beef Show | Prairie Pavilion
- 9:00 AM** Explore Kansas Festival | Oz Gallery
- 9:00 AM** Gelbvieh & Balancer Beef Show | Prairie Pavilion
- 9:30 AM** Commercial Gilt Show | Sheep, Swine and Goat Bldg.
- 9:30 AM** Open Barrow Swine Show | Sheep, Swine and Goat Bldg.
- 9:30 AM** Open Swine Breed Shows | Sheep, Swine and Goat Bldg.
- 9:30 AM** Rub-A-Dub-Dub What's in the Tub? | Agriculture Ed. Exhibit Bldg.
- 10:00 AM** Dr. Goddard's Lab | Education Center
- 10:00 AM** Glenda and Mike Ventriloquist and Magic Show | Hutchinson Regional Healthcare System Stage at Lake Talbott
- 10:00 AM** Milking Demo | Milking Parlor



- 10:00 AM** Moo U | Birthing Center
- 10:00 AM** 4-H Presentations | 4H Centennial Hall
- 10:00 AM** Roy Coffey Antique Farm Machinery Show | Administration Bldg. Parking Lot
- 11:00 AM** Dr. Goddard's Lab | Education Center
- 11:00 AM** Milking Demo | Milking Parlor
- 11:00 AM** Moo U | Birthing Center
- 11:00 AM** Ninja Experience | Gottschalk Park
- 11:00 AM** Manhattan High School | Peoples Bank and Trust Arena
- 11:00 AM** Once Saved | Hutchinson Regional Healthcare System Stage at Lake Talbott
- 11:00 AM** Watusi Show | Livestock Annex
- 11:30 AM** Rub-A-Dub-Dub What's in the Tub? | Agriculture Ed. Exhibit Bldg.

SATURDAY, SEPT. 18

SPONSORED BY:



- 8:00 AM** 4-H/FFA Horse Show | Expo Center
- 8:00 AM** 4-H/FFA Rabbit Judging | Rabbit Barn
- 8:00 AM** 4-H/FFA Youth - Dairy Goat Show | Sheep, Swine and Goat Bldg.
- 9:00 AM** Moo U | Birthing Center
- 9:00 AM** Angus ROV Cattle Show | Prairie Pavilion

12:00 PM Dr. Goddard's Lab | Education Center

12:00 PM Milking Demo | Milking Parlor

12:00 PM Moo U | Birthing Center

12:00 PM Fourte | Hutchinson Regional Healthcare System Stage at Lake Talbott

1:00 PM Milking Demo | Milking Parlor

1:00 PM Once Saved | Hutchinson Regional Healthcare System Stage at Lake Talbott

1:00 PM Sassanachs | Peoples Bank and Trust Arena

1:30 PM Ninja Experience | Gottschalk Park

2:00 PM Dr. Goddard's Lab | Education Center

2:00 PM Milking Demo | Milking Parlor

2:00 PM Moo U | Birthing Center

2:00 PM Grabbing Some Grub! | Agriculture Ed. Exhibit Bldg. , FFA Agricultural Exhibit Area

2:00 PM Junior Doe Dairy Goat Show | Sheep, Swine and Goat Bldg.

2:00 PM Nelly with Willie Jones | Nex-Tech Wireless Grandstand

2:00 PM Ron Diamond Hypnotist | Peoples Bank and Trust Arena

2:00 PM Wild Horse Youth Challenge | Expo Center

3:00 PM Moo U | Birthing Center

3:00 PM Fourte | Hutchinson Regional Healthcare System Stage at Lake Talbott

4:00 PM Moo U | Birthing Center

4:00 PM INSTEP | Hutchinson Regional Healthcare System Stage at Lake Talbott

4:00 PM Woodcarver Auction | Peoples Bank and Trust Arena

5:00 PM Moo U | Birthing Center

5:00 PM Ron Diamond Hypnotist | Peoples Bank and Trust Arena

5:00 PM The Parr Family | Hutchinson Regional Healthcare System Stage at Lake Talbott

6:00 PM Milking Demo | Milking Parlor

6:00 PM INSTEP | Hutchinson Regional Healthcare System Stage at Lake Talbott

6:30 PM Ninja Experience | Gottschalk Park

6:30 PM Beef Supreme Drive | Prairie Pavilion

6:30 PM Rub-A-Dub-Dub What's in the Tub? | Agriculture Ed. Exhibit Bldg.

7:00 PM Ron Diamond Hypnotist | Peoples Bank and Trust Arena

7:00 PM The Parr Family | Hutchinson Regional Healthcare System Stage at Lake Talbott

7:30 PM Chayce Beckham | Peoples Bank and Trust Arena

SUNDAY, SEPT. 19

ALL DAY Kansas State Fair Outdoor Auto Show | Administration Bldg. Parking Lot

8:00 AM Llama Show | Expo Center & Expo II

8:00 AM Open Senior Dairy Goat Show | Sheep, Swine and Goat Bldg.

8:00 AM Wild Horse Youth Challenge | Expo Center

9:00 AM Moo U | Birthing Center

9:00 AM Explore Kansas Festival | Oz Gallery

9:30 AM Rub-A-Dub-Dub What's in the Tub? | Agriculture Ed. Exhibit Bldg.

9:30 AM Woodworking & Woodturning Demos | Oz Gallery, Domestic Arts Bldg.

10:00 AM Dr. Goddard's Lab | Education Center

10:00 AM Glenda and Mike Ventriloquist and Magic Show | Hutchinson Regional Healthcare System Stage at Lake Talbott

10:00 AM Milking Demo | Milking Parlor

10:00 AM Moo U | Birthing Center

10:00 AM 4-H Presentations | 4H Centennial Hall

10:00 AM 4Given | Peoples Bank and Trust Arena

11:00 AM Dr. Goddard's Lab | Education Center

11:00 AM Milking Demo | Milking Parlor

11:00 AM Moo U | Birthing Center

11:00 AM Ninja Experience | Gottschalk Park

11:00 AM Leah Watts | Hutchinson Regional Healthcare System Stage at Lake Talbott

11:30 AM Rub-A-Dub-Dub What's in the Tub? | Agriculture Ed. Exhibit Bldg.

12:00 PM Dr. Goddard's Lab | Education Center

12:00 PM Milking Demo | Milking Parlor

12:00 PM Moo U | Birthing Center

12:00 PM Pronto Pup Eating Contest | Peoples Bank and Trust Arena

1:00 PM Milking Demo | Milking Parlor

1:00 PM Leah Watts | Hutchinson Regional Healthcare System Stage at Lake Talbott

1:00 PM Ron Diamond Hypnotist | Peoples Bank and Trust Arena

1:30 PM Ninja Experience | Gottschalk Park

2:00 PM Dr. Goddard's Lab | Education Center

2:00 PM Milking Demo | Milking Parlor

2:00 PM Moo U | Birthing Center

2:00 PM 4Given | Peoples Bank and Trust Arena

2:00 PM Abundance Quartet | Hutchinson Regional Healthcare System Stage at Lake Talbott

2:00 PM Grabbing Some Grub! | Agriculture Ed. Exhibit Bldg. , FFA Agricultural Exhibit Area

3:00 PM Darci Lynne Farmer | Nex-Tech Wireless Grandstand

3:00 PM Ron Diamond Hypnotist | Peoples Bank and Trust Arena

3:00 PM Tropical Shores | Hutchinson Regional Healthcare System Stage at Lake Talbott

4:00 PM Fourte | Hutchinson Regional Healthcare System Stage at Lake Talbott

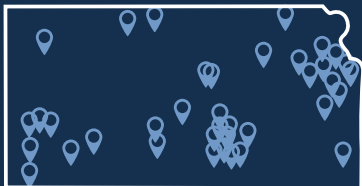
5:00 PM Tropical Shores | Hutchinson Regional Healthcare System Stage at Lake Talbott

6:30 PM Ninja Experience | Gottschalk Park





CELEBRATE ALL THINGS KANSAS, INCLUDING KANSAS-MADE FUEL!



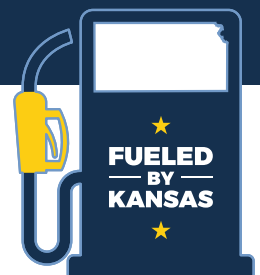
50+ locations offering E-15 fuel

When we use fuel produced locally, all Kansans benefit.

Drivers have lower fuel costs, Kansas ethanol plants create local jobs and investment, Kansas farm families benefit from stronger demand for their corn crop, and we all benefit from cleaner air.

Find a station near you and learn more at FueledByKansas.com

Supported by Kansas corn farmers through their checkoff.



RCB BANK

Digital Banking Tools

Keeping You Connected



Online Banking | Mobile Banking | Mobile Deposit | Text Banking | *instaPay* | Anytime Banker

Bank Anytime, Anywhere

RCBbank.com/BankAnywhere

855.BANK.RCB

Terms, qualifications and fees may apply. Member FDIC.